

SARS-CoV-2 (COVID-19) ORF7a Antibody

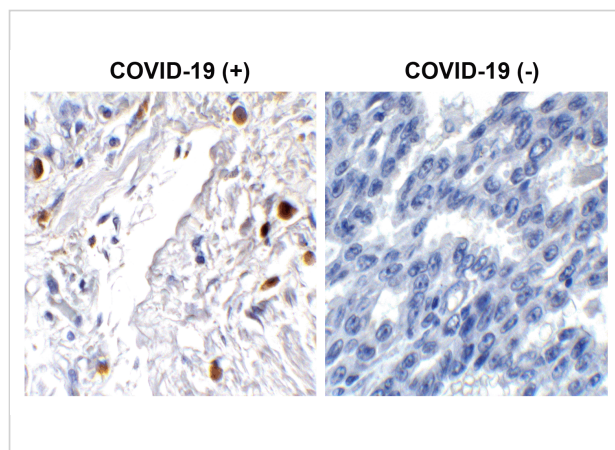
CATALOG NUMBER: 9285

Specifications

Host Species	Rabbit
Species Reactivity	Virus
Homology	Predicted reactivity based on immunogen sequence: SARS-CoV ORF7a: (73%).
Immunogen	Anti-SARS-CoV-2 (COVID-19) ORF7a antibody (9285) was raised against a peptide corresponding to 15 amino acids near the central domain of SARS-CoV-2 (COVID-19) ORF7a protein. The immunogen is located within 40-90 amino acids of the SARS-CoV-2 (COVID-19) ORF7a protein.
Conjugate	Unconjugated
Tested Applications	ELISA, IHC
User Note	Optimal dilutions for each application to be determined by the researcher.
Predicted Molecular Weight	14kD

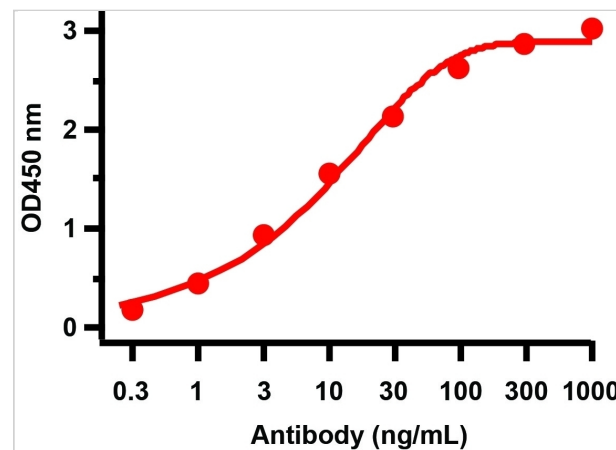
Properties

Purification	SARS-CoV-2 (COVID-19) ORF7a Antibody is affinity chromatography purified via peptide column.
Clonality	Polyclonal
Isotype	IgG
Physical State	Liquid
Buffer	SARS-CoV-2 (COVID-19) ORF7a antibody is supplied in PBS containing 0.02% sodium azide.
Concentration	1 mg/mL
Storage Conditions	SARS-CoV-2 (COVID-19) ORF7a antibody can be stored at 4°C for three months and -20°C, stable for up to one year. As with all antibodies care should be taken to avoid repeated freeze thaw cycles. Antibodies should not be exposed to prolonged high temperatures.



SARS-CoV-2 (COVID-19) ORF7a Antibody 1

Figure 1 Immunohistochemistry Validation of SARS-CoV-2 (COVID-19) ORF7a in COVID-19 Patient Lung
Immunohistochemical analysis of paraffin-embedded COVID-19 patient lung tissue ...



SARS-CoV-2 (COVID-19) ORF7a Antibody 1

Figure 2 ELISA Validation
Antibodies: SARS-CoV-2 (COVID-19) ORF7a Antibody, 9285. A direct ELISA was performed using SARS-CoV-2 ORF7a immunogen peptide (9285P)) as coating anti...

Disclaimer

Disclaimer

Optimal dilutions/concentrations should be determined by the end user. The information provided is a guideline for product use. This product is for research use only.

For research use only. For additional information, visit ProSci's [Terms and Conditions Page](#).