

SARS-CoV-2 (COVID-19) ORF3b Antibody

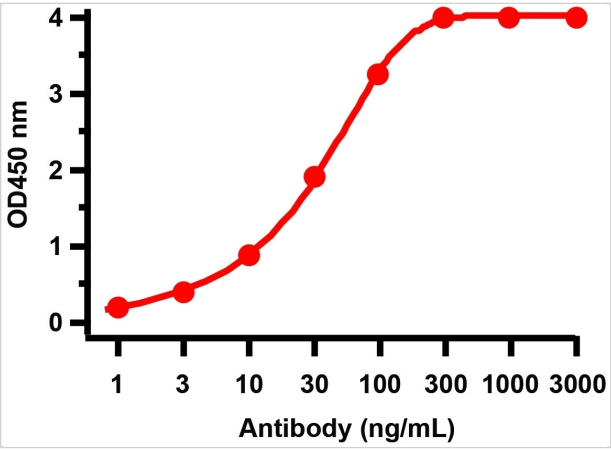
CATALOG NUMBER: 9277

Specifications

| | |
|----------------------------|---|
| Host Species | Rabbit |
| Species Reactivity | Virus |
| Immunogen | Anti-SARS-CoV-2 (COVID-19) ORF3b antibody (9277) was raised against a peptide corresponding to 12 amino acids near carboxyl terminus of SARS-CoV-2 (COVID-19) ORF3b protein. The immunogen is located within the last 50 amino acids of the SARS-CoV-2 (COVID-19) ORF3b protein. |
| Conjugate | Unconjugated |
| Tested Applications | ELISA, WB |
| User Note | Optimal dilutions for each application to be determined by the researcher. |
| Specificity | ORF3b Antibody is predicted to not cross-react with other coronavirus family members. |
| Predicted Molecular Weight | 17kD |

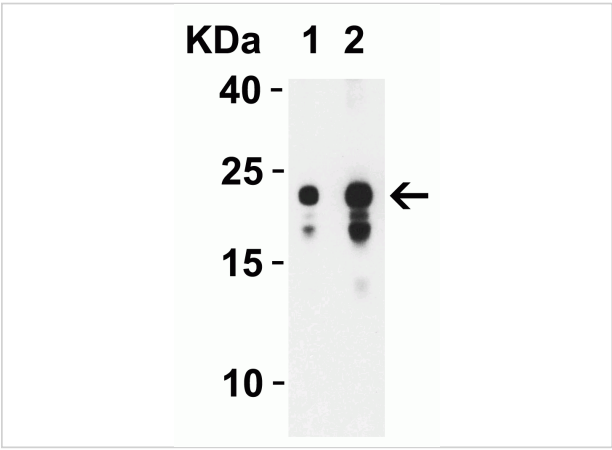
Properties

| | |
|--------------------|---|
| Purification | SARS-CoV-2 (COVID-19) ORF3b Antibody is affinity chromatography purified via peptide column. |
| Clonality | Polyclonal |
| Isotype | IgG |
| Physical State | Liquid |
| Buffer | SARS-CoV-2 (COVID-19) ORF3b antibody is supplied in PBS containing 0.02% sodium azide. |
| Concentration | 1 mg/mL |
| Storage Conditions | SARS-CoV-2 (COVID-19) ORF3b antibody can be stored at 4°C for three months and -20°C, stable for up to one year. As with all antibodies care should be taken to avoid repeated freeze thaw cycles. Antibodies should not be exposed to prolonged high temperatures. |



SARS-CoV-2 (COVID-19) ORF3b Antibody 1

Figure 1 ELISA Validation with SARS-CoV-2 (COVID-19) ORF3b Protein
Antibodies: SARS-CoV-2 (COVID-19) ORF3b Antibody, 9277. A direct ELISA was performed using SARS-CoV-2 ORF3b r...



SARS-CoV-2 (COVID-19) ORF3b Antibody 2

Figure 2 Western Blot Validation with SARS-CoV-2 (COVID-19) ORF3b Protein
Loading: 30 ng per lane of SARS-CoV-2 (COVID-19) ORF3b recombinant protein (10-005).Antibodies: SARS-Co...

Disclaimer

| | |
|-------------------|--|
| Disclaimer | Optimal dilutions/concentrations should be determined by the end user. The information provided is a guideline for product use. This product is for research use only. |
|-------------------|--|

For research use only. For additional information, visit ProSci's [Terms and Conditions Page](#).