

SARS-CoV-2 (COVID-19) NSP6 Antibody

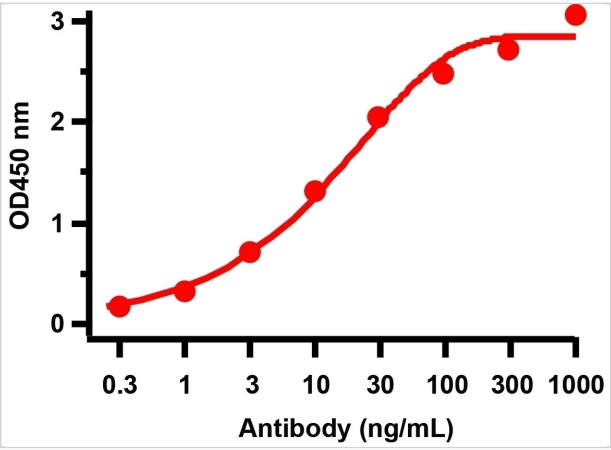
CATALOG NUMBER: 9177

Specifications

Host Species	Rabbit
Species Reactivity	Virus
Homology	Predicted reactivity based on immunogen sequence: SARS-CoV NSP6 protein: (94%)
Immunogen	Anti-SARS-CoV-2 (COVID-19) NSP6 antibody (9177) was raised against a peptide corresponding to 18 amino acids in the center of SARS-CoV-2 (COVID-19) NSP6 protein. The immunogen is located in between 230-280 amino acids of the SARS-CoV-2 (COVID-19) NSP6 protein.
Conjugate	Unconjugated
Tested Applications	ELISA
User Note	Optimal dilutions for each application to be determined by the researcher.

Properties

Purification	SARS-CoV-2 (COVID-19) NSP6 Antibody is affinity chromatography purified via peptide column.
Clonality	Polyclonal
Isotype	IgG
Physical State	Liquid
Buffer	SARS-CoV-2 (COVID-19) NSP6 Antibody is supplied in PBS containing 0.02% sodium azide.
Concentration	1 mg/mL
Storage Conditions	SARS-CoV-2 (COVID-19) NSP6 antibody can be stored at 4°C for three months and -20°C, stable for up to one year. As with all antibodies care should be taken to avoid repeated freeze thaw cycles. Antibodies should not be exposed to prolonged high temperatures.



SARS-CoV-2 (COVID-19) NSP6
Antibody 1

Figure 1 ELISA Validation
Antibodies: SARS-CoV-2 (COVID-19) NSP6 Antibody, 9177. A direct ELISA was performed using immunogen peptide (9177P) as coating antigen and the anti-S...

Disclaimer

Disclaimer	Optimal dilutions/concentrations should be determined by the end user. The information provided is a guideline for product use. This product is for research use only.
------------	--

For research use only. For additional information, visit ProSci's [Terms and Conditions Page](#).