

CDKN2A Antibody

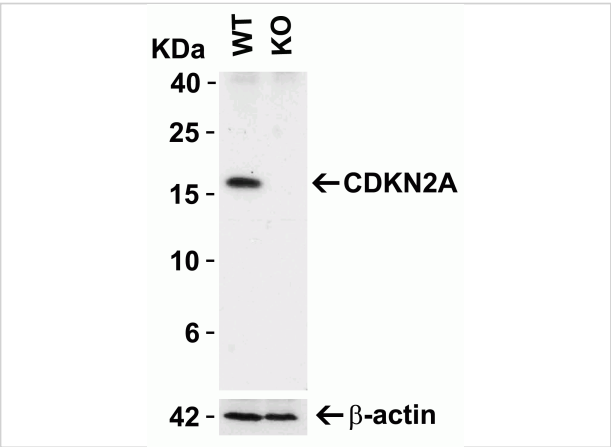
CATALOG NUMBER: 8975

Specifications

| | |
|----------------------------|---|
| Host Species | Rabbit |
| Species Reactivity | Human |
| Immunogen | Anti-CDKN2A antibody (8975) was raised against a peptide corresponding to 17 amino acids near the carboxy terminus of human CDKN2A. The immunogen is located within the last 50 amino acids of CDKN2A. |
| Conjugate | Unconjugated |
| Tested Applications | ELISA, IHC-P, WB |
| User Note | Optimal dilutions for each application to be determined by the researcher. |
| Predicted Molecular Weight | Predicted: 17kD Observed: 17kD |

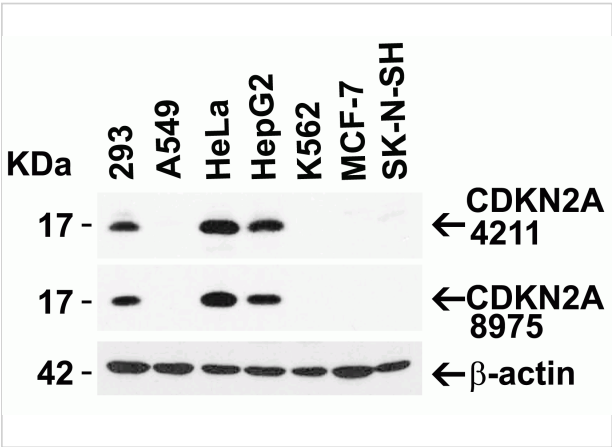
Properties

| | |
|--------------------|--|
| Purification | CDKN2A Antibody is affinity chromatography purified via peptide column. |
| Clonality | Polyclonal |
| Isotype | IgG |
| Physical State | Liquid |
| Buffer | CDKN2A Antibody is supplied in PBS containing 0.02% sodium azide. |
| Concentration | 1 mg/mL |
| Storage Conditions | CDKN2A antibody can be stored at 4°C for three months and -20°C, stable for up to one year. As with all antibodies care should be taken to avoid repeated freeze thaw cycles. Antibodies should not be exposed to prolonged high temperatures. |



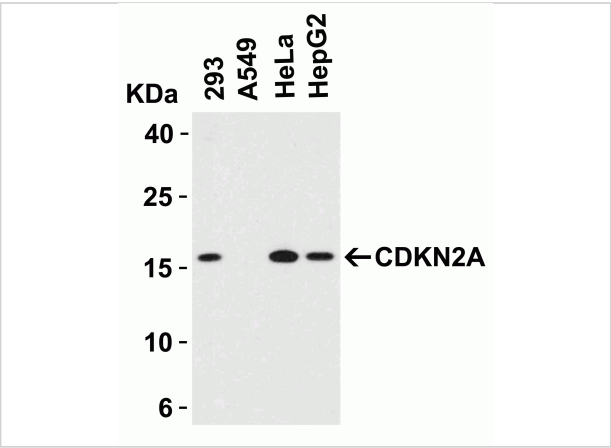
CDKN2A Antibody 1

Figure 1 KO Validation of CDKN2A in 293 Cells
 Loading: 10 μ g of 293 WT cell lysates or CDKN2A KO cell lysates.
 Antibodies: CDKN2A, 8975 (2 μ g/mL) and beta-actin, 3779 (1 μ g/mL)...



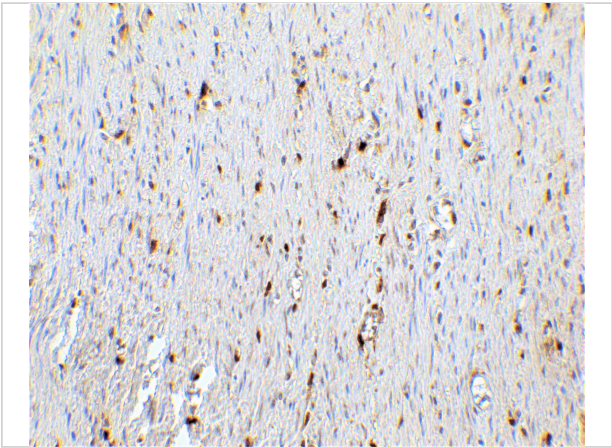
CDKN2A Antibody 2

Figure 2 Independent Antibody Validation (IAV) via Protein Expression Profile in Human Cell Lines
 Loading: 15 μ g of lysates per lane. Antibodies: CDKN2A, 4211 (2 μ g/mL), CDKN2A, ...



CDKN2A Antibody 3

Figure 3 Western Blot Validation in Human Cell Lines
 Loading: 15 μ g of lysates per lane. Antibodies: CDKN2A, 8975 (2 μ g/mL), 1h incubation at RT in 5% NFDm/TBST. Secondary: Goat...



CDKN2A Antibody 4

Figure 4 Immunohistochemistry Validation of CDKN2A in Human Colon Tissue
 Immunohistochemical analysis of paraffin-embedded human colon tissue using anti-CDKN2A antibody (8975) ...

Disclaimer

| | |
|------------|--|
| Disclaimer | Optimal dilutions/concentrations should be determined by the end user. The information provided is a guideline for product use. This product is for research use only. |
|------------|--|

For research use only. For additional information, visit ProSci's [Terms and Conditions Page](#).