

hRIP3 Antibody

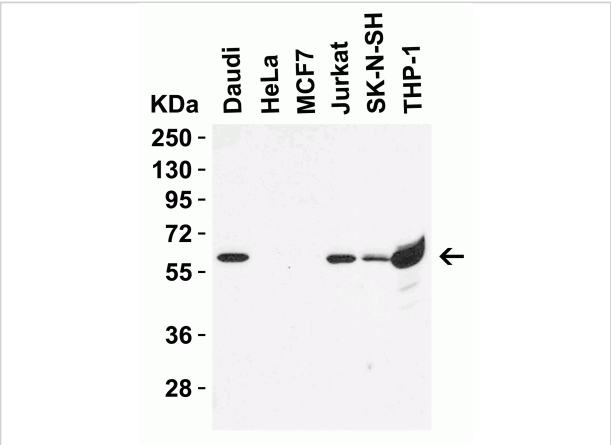
CATALOG NUMBER: 8963

Specifications

Host Species	Rabbit
Species Reactivity	Human
Immunogen	Anti-hRIP3 antibody (8963) was raised against a peptide corresponding to 18 amino acids near the carboxy terminus of human hRIP3. The immunogen is located within the last 50 amino acids of hRIP3.
Conjugate	Unconjugated
Tested Applications	ELISA, IF, IHC-P, WB
User Note	Optimal dilutions for each application to be determined by the researcher.
Specificity	Several isoforms of hRIP3 are known to exist.
Predicted Molecular Weight	Predicted: 57kD Observed: 57 kD

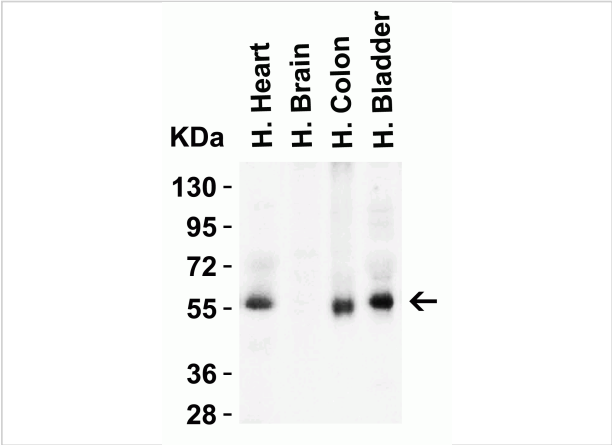
Properties

Purification	hRIP3 Antibody is affinity chromatography purified via peptide column.
Clonality	Polyclonal
Isotype	IgG
Physical State	Liquid
Buffer	hRIP3 Antibody is supplied in PBS containing 0.02% sodium azide.
Concentration	1 mg/ml
Storage Conditions	hRIP3 antibody can be stored at 4°C for three months and -20°C, stable for up to one year. As with all antibodies care should be taken to avoid repeated freeze thaw cycles. Antibodies should not be exposed to prolonged high temperatures.



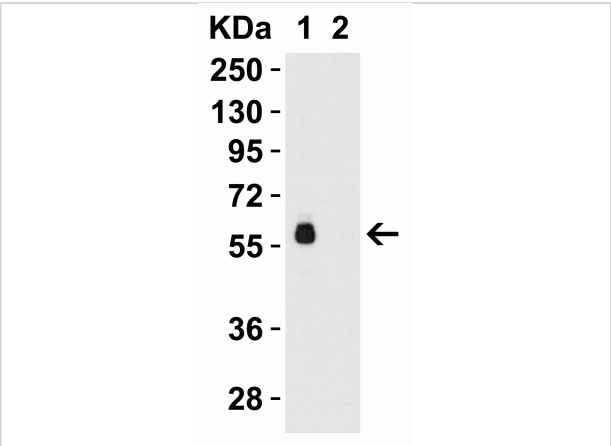
hRIP3 Antibody 1

Figure 1 Western Blot Validation in Human Cell Lines
 Loading: 15 µg of lysates per lane. Antibodies: hRIP3, 8963 (0.5 µg/mL), 1h incubation at RT in 5% NFDM/TBST. Secondary: Goat anti-...



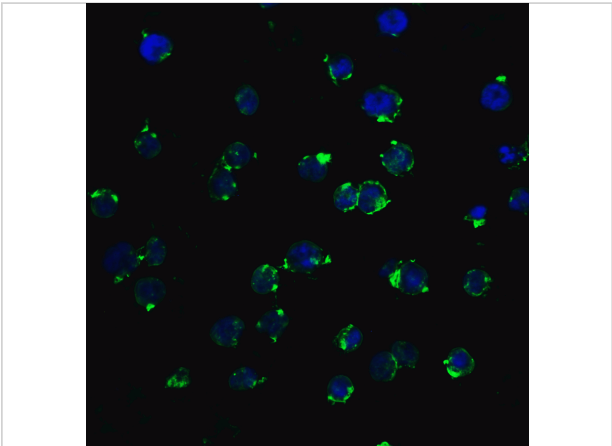
hRIP3 Antibody 2

Figure 2 Western Blot Validation in Human Tissues
 Loading: 15 µg of lysates per lane. Antibodies: hRIP3, 8963 (1 µg/mL), 1h incubation at RT in 5% NFDM/TBST. Secondary: Goat anti-...



hRIP3 Antibody 3

Figure 3 Western Blot Validation of hRIP3 in Human THP-1 Cell Lysate
 Loading: 15 µg of lysates per lane. Antibodies: hRIP3, 8963 (1 µg/mL), 1h incubation at RT in 5% NFDM/TBST. S...



hRIP3 Antibody 4

Figure 4 Immunofluorescence Validation of hRIP3 in Molt4 Cells
 Immunofluorescent analysis of 4% paraformaldehyde-fixed Molt4 cells labeling hRIP3 with 8963 at 20 µg/mL, followed...

Disclaimer

Disclaimer

Optimal dilutions/concentrations should be determined by the end user. The information provided is a guideline for product use. This product is for research use only.

For research use only. For additional information, visit ProSci's [Terms and Conditions Page](#).