



ProSci Incorporated
12170 Flint Place
Poway, CA 92064, USA
prosci-inc.com

P: +1 (888) 513-9525
Local: +1 (858) 513-2638
Fax: +1 (858) 513-2692

customercare@prosci-inc.com
techsupport@prosci-inc.com

ICOSLG Antibody

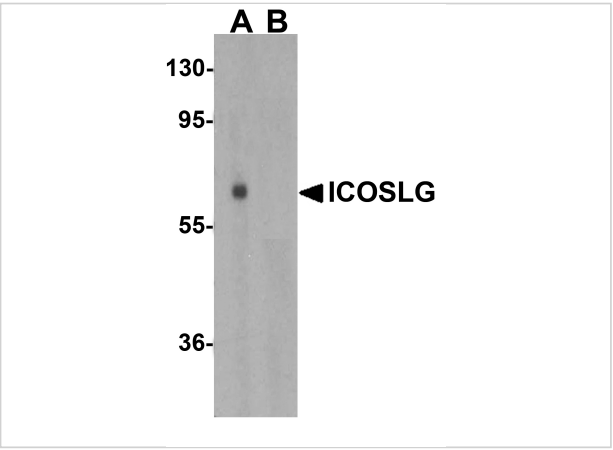
CATALOG NUMBER: 8687

Specifications

Host Species	Rabbit
Species Reactivity	Human
Homology	Predicted species reactivity based on immunogen sequence: Mouse: (80%)
Immunogen	ICOSLG antibody was raised against a peptide corresponding to 17 amino acids near the center of human ICOSLG. The immunogen is located within amino acids 150 - 200 of ICOSLG.
Conjugate	Unconjugated
Tested Applications	ELISA, IF, IHC, WB
User Note	Optimal dilutions for each application to be determined by the researcher.
Predicted Molecular Weight	Predicted: 33 kDa Observed: 60 kDa

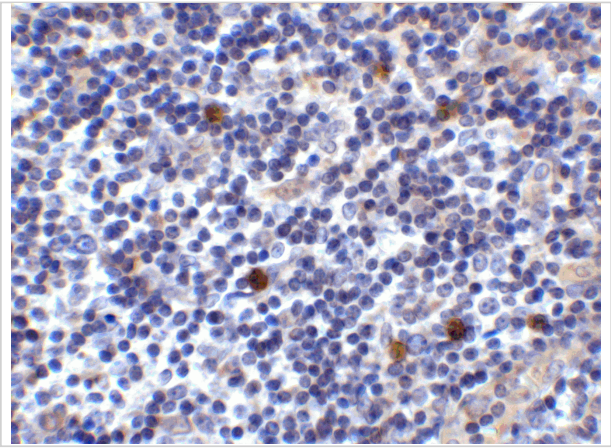
Properties

Purification	ICOSLG Antibody is affinity chromatography purified via peptide column.
Clonality	Polyclonal
Isotype	IgG
Physical State	Liquid
Buffer	ICOSLG Antibody is supplied in PBS containing 0.02% sodium azide.
Concentration	1 mg/mL
Storage Conditions	ICOSLG antibody can be stored at 4°C for three months and -20°C, stable for up to one year. As with all antibodies care should be taken to avoid repeated freeze thaw cycles. Antibodies should not be exposed to prolonged high temperatures.



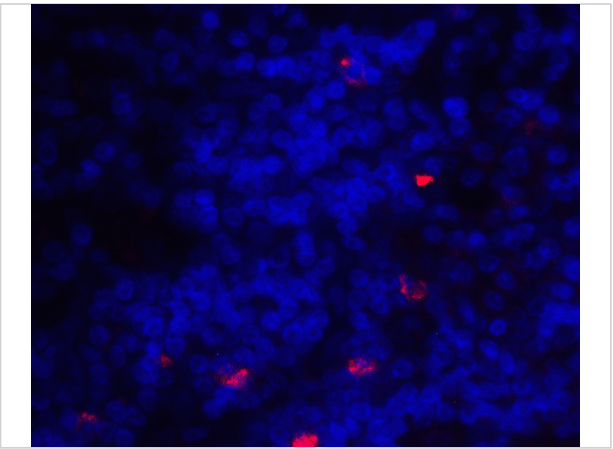
ICOSLG Antibody 1

Western blot analysis of ICOSLG in human lymph node tissue lysate with ICOSLG antibody at 1 µg/mL in (A) the absence and (B) the presence of blocking peptide.



ICOSLG Antibody 2

Immunohistochemistry of ICOSLG in human lymph node tissue with ICOSLG antibody at 2 µg/mL.



ICOSLG Antibody 3

Immunofluorescence of ICOSLG in human lymph node tissue with ICOSLG antibody at 20 µg/mL.

Disclaimer

Disclaimer	Optimal dilutions/concentrations should be determined by the end user. The information provided is a guideline for product use. This product is for research use only.
------------	--

For research use only. For additional information, visit ProSci's [Terms and Conditions Page](#).