

LAG3 Antibody

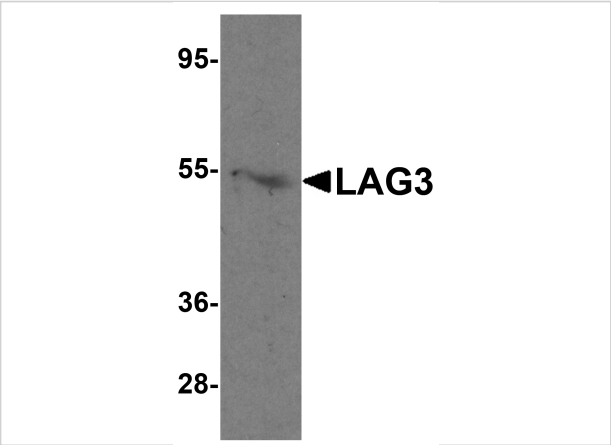
CATALOG NUMBER: 8655

Specifications

Host Species	Rabbit
Species Reactivity	Human, Mouse
Homology	Predicted species reactivity based on immunogen sequence: Rat: (65%)
Immunogen	LAG3 antibody was raised against a peptide corresponding to 18 amino acids near the amino terminus of human LAG3. The immunogen is located within amino acids 110 - 160 of LAG3.
Conjugate	Unconjugated
Tested Applications	ELISA, IF, IHC-P, WB
User Note	Optimal dilutions for each application to be determined by the researcher.
Specificity	At least two antibodies are known to exist; this antibody will only detect the largest isoform.
Predicted Molecular Weight	Predicted: 55 kDa Observed: 54 kDa

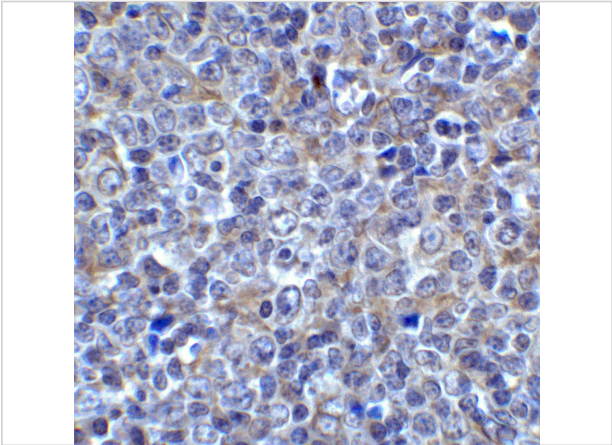
Properties

Purification	LAG3 Antibody is affinity chromatography purified via peptide column.
Clonality	Polyclonal
Isotype	IgG
Physical State	Liquid
Buffer	LAG3 Antibody is supplied in PBS containing 0.02% sodium azide.
Concentration	1 mg/mL
Storage Conditions	LAG3 antibody can be stored at 4°C for three months and -20°C, stable for up to one year. As with all antibodies care should be taken to avoid repeated freeze thaw cycles. Antibodies should not be exposed to prolonged high temperatures.



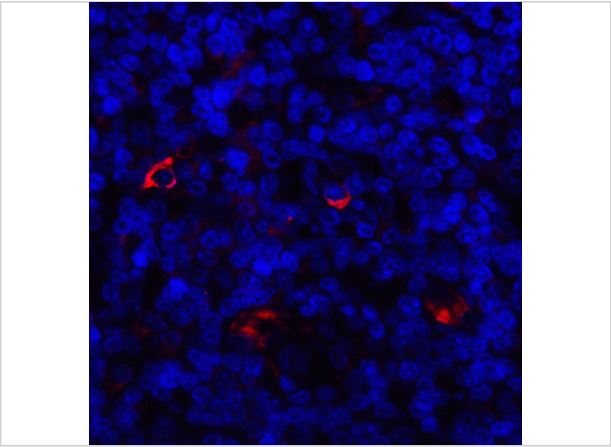
LAG3 Antibody 1

Western blot analysis of LAG3 in mouse liver tissue lysate with LAG3 antibody at 1 µg/mL.



LAG3 Antibody 2

Immunohistochemistry of LAG3 in human tonsil tissue with LAG3 antibody at 5 µg/mL.



LAG3 Antibody 3

Immunofluorescence of LAG3 in human tonsil tissue with LAG3 antibody at 20 µg/mL.

Red: LAG3 Antibody (8655)
Blue: DAPI staining

Disclaimer

Disclaimer	Optimal dilutions/concentrations should be determined by the end user. The information provided is a guideline for product use. This product is for research use only.
------------	--

For research use only. For additional information, visit ProSci's [Terms and Conditions Page](#).