

RBM23 Antibody

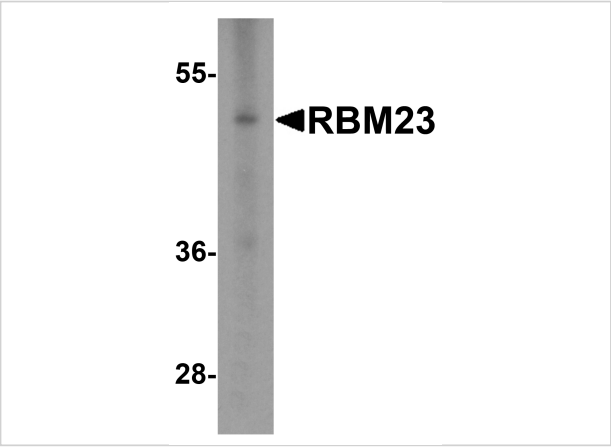
CATALOG NUMBER: 8611

Specifications

Host Species	Rabbit
Species Reactivity	Human
Immunogen	RBM23 antibody was raised against a peptide corresponding to 14 amino acids near the amino terminus of human RBM23.
Conjugate	Unconjugated
Tested Applications	ELISA, WB
User Note	Optimal dilutions for each application to be determined by the researcher.
Predicted Molecular Weight	Predicted: 48 kDa Observed: 50 kDa

Properties

Purification	RBM23 Antibody is affinity chromatography purified via peptide column.
Clonality	Polyclonal
Isotype	IgG
Physical State	Liquid
Buffer	RBM23 Antibody is supplied in PBS containing 0.02% sodium azide.
Concentration	1 mg/mL
Storage Conditions	RBM23 antibody can be stored at 4°C for three months and -20°C, stable for up to one year. As with all antibodies care should be taken to avoid repeated freeze thaw cycles. Antibodies should not be exposed to prolonged high temperatures.



RBM23 Antibody 1

Western blot analysis of RBM23 in (A) human tonsil and (B) rat stomach tissue lysate with RBM23 antibody at 1 µg/mL.

Disclaimer

Disclaimer	Optimal dilutions/concentrations should be determined by the end user. The information provided is a guideline for product use. This product is for research use only.
------------	--

For research use only. For additional information, visit ProSci's [Terms and Conditions Page](#).