

SUSD1 Antibody

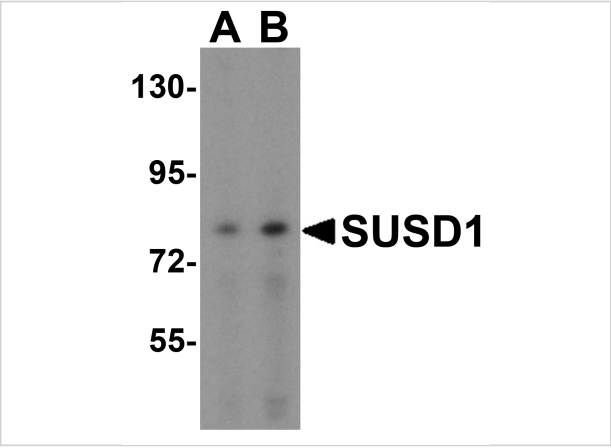
CATALOG NUMBER: 8609

Specifications

Host Species	Rabbit
Species Reactivity	Human
Immunogen	SUSD1 antibody was raised against a peptide corresponding to 14 amino acids near the amino terminus of human SUSD1.
Conjugate	Unconjugated
Tested Applications	ELISA, WB
User Note	Optimal dilutions for each application to be determined by the researcher.
Specificity	SUSD1 Antibody is predicted to not cross-react with other SUSDfamily members.
Predicted Molecular Weight	Predicted: 82 kDa Observed: 82 kDa

Properties

Purification	SUSD1 Antibody is affinity chromatography purified via peptide column.
Clonality	Polyclonal
Isotype	IgG
Physical State	Liquid
Buffer	SUSD1 Antibody is supplied in PBS containing 0.02% sodium azide.
Concentration	1 mg/mL
Storage Conditions	SUSD1 antibody can be stored at 4°C for three months and -20°C, stable for up to one year. As with all antibodies care should be taken to avoid repeated freeze thaw cycles. Antibodies should not be exposed to prolonged high temperatures.



SUS D1 Antibody 1

Western blot analysis of SUS D1 in 293 cell lysate with SUS D1 antibody at (A) 0.5 and (B) 1 µg/mL.

Disclaimer

Disclaimer	Optimal dilutions/concentrations should be determined by the end user. The information provided is a guideline for product use. This product is for research use only.
------------	--

For research use only. For additional information, visit ProSci's [Terms and Conditions Page](#).