

ETV4 Antibody

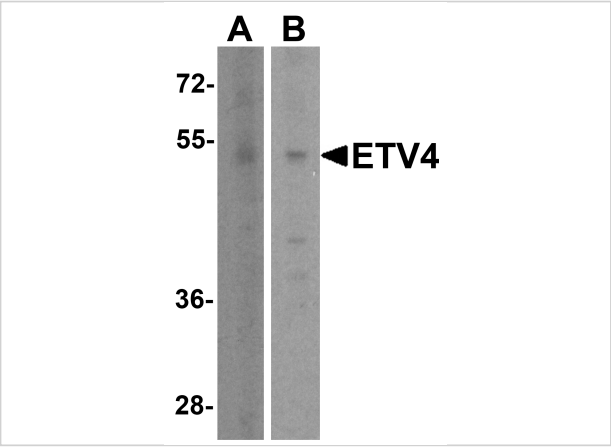
CATALOG NUMBER: 8535

Specifications

Host Species	Rabbit
Species Reactivity	Human, Mouse, Rat
Homology	Predicted species reactivity based on immunogen sequence: Zebrafish: (72%)
Immunogen	ETV4 antibody was raised against a peptide corresponding to 19 amino acids near the amino terminus of human ETV4.
Conjugate	Unconjugated
Tested Applications	ELISA, WB
User Note	Optimal dilutions for each application to be determined by the researcher.
Specificity	At least three isoforms of ETV4 are known to exist. This antibody will only detect the two longest isoforms.
Predicted Molecular Weight	Predicted: 53 kDa Observed: 53 kDa

Properties

Purification	ETV4 Antibody is affinity chromatography purified via peptide column.
Clonality	Polyclonal
Isotype	IgG
Physical State	Liquid
Buffer	ETV4 Antibody is supplied in PBS containing 0.02% sodium azide.
Concentration	1 mg/mL
Storage Conditions	ETV4 antibody can be stored at 4°C for three months and -20°C, stable for up to one year. As with all antibodies care should be taken to avoid repeated freeze thaw cycles. Antibodies should not be exposed to prolonged high temperatures.



ETV4 Antibody 1

Western blot analysis of ETV4 in (A) human brain tissue lysate and (B) A431 cell lysate with ETV4 antibody at 1 µg/ml.

Disclaimer

Disclaimer	Optimal dilutions/concentrations should be determined by the end user. The information provided is a guideline for product use. This product is for research use only.
------------	--

For research use only. For additional information, visit ProSci's [Terms and Conditions Page](#).