

ALSFTD Antibody

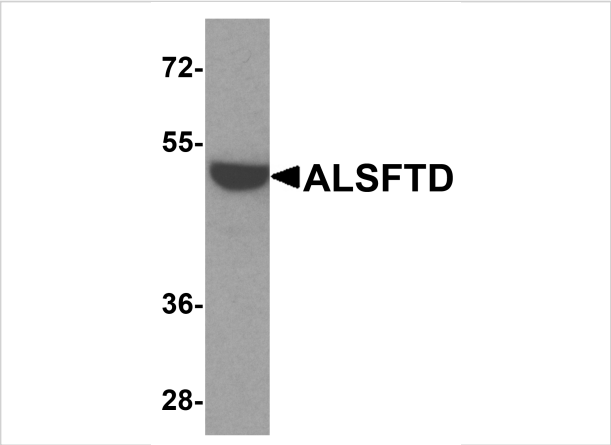
CATALOG NUMBER: 8469

Specifications

Host Species	Rabbit
Species Reactivity	Human, Mouse, Rat
Immunogen	ALSFTD antibody was raised against a 19 amino acid peptide from near the carboxy terminus of human ALSFTD. The immunogen is located within amino acids 400 - 450 of ALSFTD.
Conjugate	Unconjugated
Tested Applications	ELISA, ICC, WB
User Note	Optimal dilutions for each application to be determined by the researcher.
Specificity	ALSFTD antibody is human, mouse and rat reactive. At least two isoforms are known to exist.
Predicted Molecular Weight	Predicted: 53 kDa Observed: 52 kDa

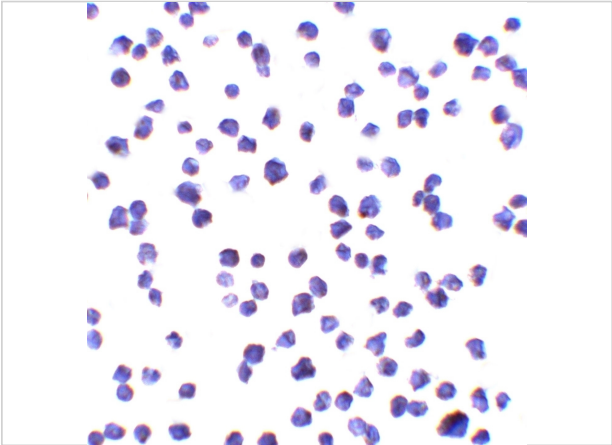
Properties

Purification	ALSFTD Antibody is affinity chromatography purified via peptide column.
Clonality	Polyclonal
Isotype	IgG
Physical State	Liquid
Buffer	ALSFTD Antibody is supplied in PBS containing 0.02% sodium azide.
Concentration	1 mg/mL
Storage Conditions	ALSFTD antibody can be stored at 4°C for three months and -20°C, stable for up to one year.



ALSFTD Antibody 1

Western blot analysis of ALSFTD in HeLa cell lysate with ALSFTD antibody at 1 µg/ml.



ALSFTD Antibody 2

Immunocytochemistry of ALSFTD in A-20 cells with ALSFTD antibody at 10 µg/ml.

Disclaimer

Disclaimer	Optimal dilutions/concentrations should be determined by the end user. The information provided is a guideline for product use. This product is for research use only.
------------	--

For research use only. For additional information, visit ProSci's [Terms and Conditions Page](#).