

SRPK1 Antibody

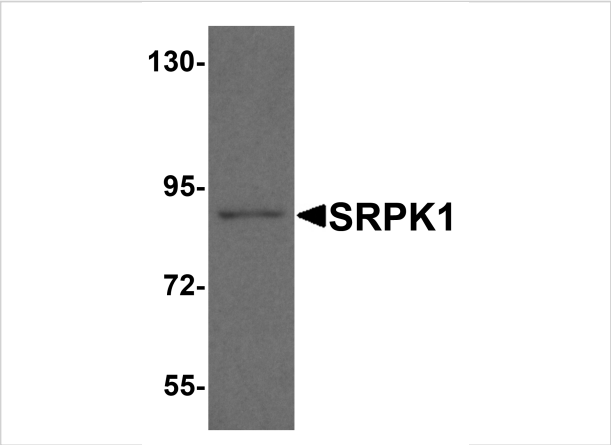
CATALOG NUMBER: 8435

Specifications

Host Species	Rabbit
Species Reactivity	Human, Mouse, Rat
Immunogen	SRPK1 antibody was raised against a 19 amino acid peptide from near the amino terminus of human SRPK1. The immunogen is located within the first 50 amino acids of SRPK1.
Conjugate	Unconjugated
Tested Applications	ELISA, IHC-P, WB
User Note	Optimal dilutions for each application to be determined by the researcher.
Specificity	SRPK1 antibody is human, mouse and rat reactive. Multiple isoforms of SRPK1 are known to exist; this antibody will detect all except isoforms b and e. SRPK1 antibody is predicted to not cross-react with SRPK2.
Predicted Molecular Weight	Predicted: 54, 72, 91 kDa Observed: 91 kDa

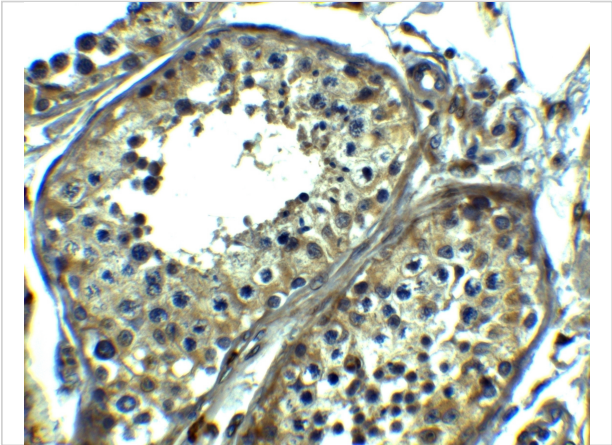
Properties

Purification	SRPK1 Antibody is affinity chromatography purified via peptide column.
Clonality	Polyclonal
Isotype	IgG
Physical State	Liquid
Buffer	SRPK1 Antibody is supplied in PBS containing 0.02% sodium azide.
Concentration	1 mg/mL
Storage Conditions	SRPK1 antibody can be stored at 4°C for three months and -20°C, stable for up to one year.



SRPK1 Antibody 1

Western blot analysis of SRPK1 in mouse heart tissue lysate with SRPK1 antibody at 1 µg/ml.



SRPK1 Antibody 2

Immunohistochemistry of SRPK1 in human testis tissue with SRPK1 antibody at 5 µg/ml.

Disclaimer

Disclaimer	Optimal dilutions/concentrations should be determined by the end user. The information provided is a guideline for product use. This product is for research use only.
------------	--

For research use only. For additional information, visit ProSci's [Terms and Conditions Page](#).