

## Chondroadherin Antibody

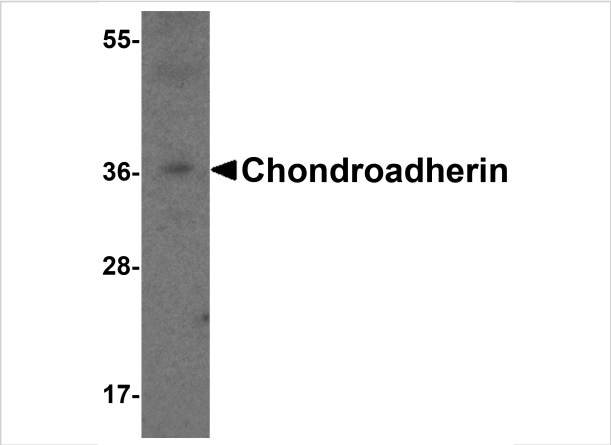
CATALOG NUMBER: 8421

### Specifications

Host Species	Rabbit
Species Reactivity	Human, Mouse, Rat
Homology	Predicted species reactivity based on immunogen sequence: Bovine: (94%)
Immunogen	Chondroadherin antibody was raised against a 17 amino acid peptide near the carboxy terminus of human Chondroadherin. The immunogen is located within the last 50 amino acids of Chondroadherin.
Conjugate	Unconjugated
Tested Applications	ELISA, ICC, WB
User Note	Optimal dilutions for each application to be determined by the researcher.
Specificity	Chondroadherin antibody is human and mouse reactive. Chondroadherin antibody is predicted to not cross-react with CHADL protein.
Predicted Molecular Weight	Predicted: 38 kDa Observed: 36 kDa

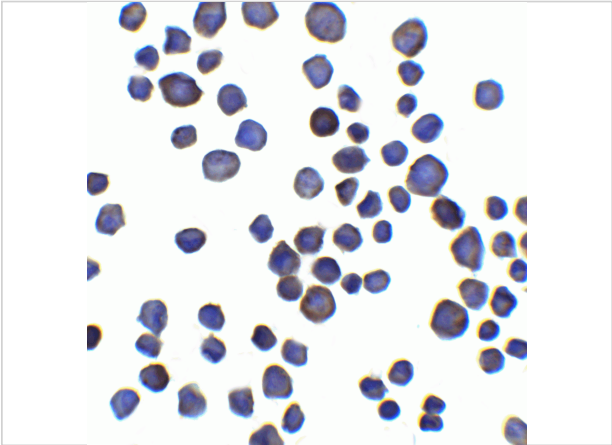
### Properties

Purification	Chondroadherin antibody is affinity chromatography purified via peptide column.
Clonality	Polyclonal
Isotype	IgG
Physical State	Liquid
Buffer	Chondroadherin antibody is supplied in PBS containing 0.02% sodium azide.
Concentration	1 mg/mL
Storage Conditions	Chondroadherin antibody can be stored at 4°C for three months and -20°C, stable for up to one year.



Chondroadherin Antibody 1

Western blot analysis of Chondroadherin in 3T3 cell lysate with Chondroadherin antibody at 1 µg/ml.



Chondroadherin Antibody 2

Immunocytochemistry of Chondroadherin in 3T3 cells with Chondroadherin antibody at 5 µg/ml.

Disclaimer

Disclaimer	Optimal dilutions/concentrations should be determined by the end user. The information provided is a guideline for product use. This product is for research use only.
------------	--

For research use only. For additional information, visit ProSci's [Terms and Conditions Page](#).