

IQCF2 Antibody

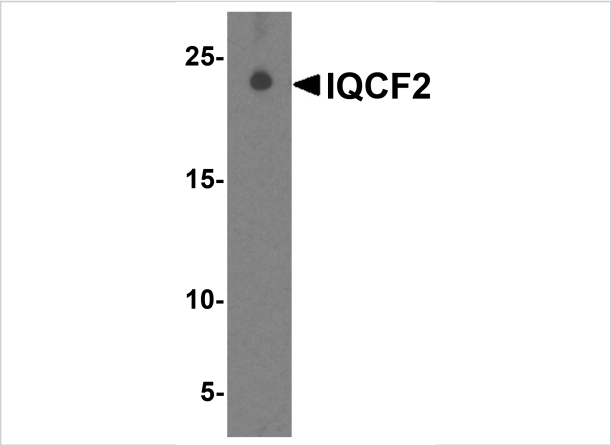
CATALOG NUMBER: 8419

Specifications

Host Species	Rabbit
Species Reactivity	Human
Immunogen	IQCF2 antibody was raised against a 19 amino acid peptide near the amino terminus of human IQCF2. The immunogen is located within the first 50 amino acids of IQCF2.
Conjugate	Unconjugated
Tested Applications	ELISA, ICC, IF, WB
User Note	Optimal dilutions for each application to be determined by the researcher.
Specificity	IQCF2 antibody is human specific. IQCF2 antibody is predicted to not cross-react with IQCF1.
Predicted Molecular Weight	Predicted: 18 kDa Observed: 22 kDa

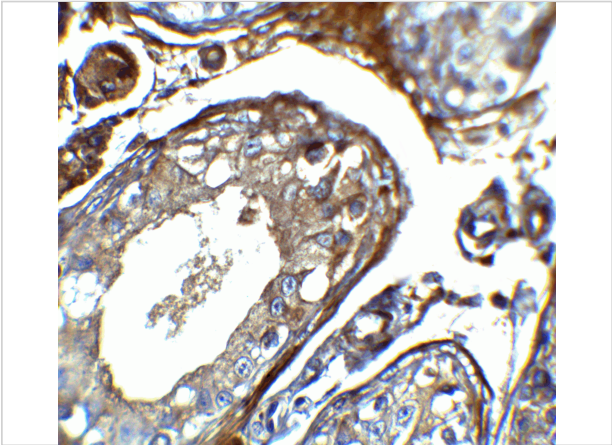
Properties

Purification	IQCF2 antibody is affinity chromatography purified via peptide column.
Clonality	Polyclonal
Isotype	IgG
Physical State	Liquid
Buffer	IQCF2 antibody is supplied in PBS containing 0.02% sodium azide.
Concentration	1 mg/mL
Storage Conditions	IQCF2 antibody can be stored at 4°C for three months and -20°C, stable for up to one year.



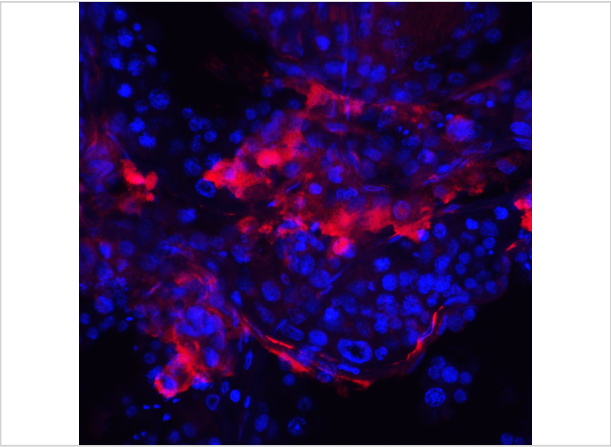
IQCF2 Antibody 1

Western blot analysis of IQCF2 in human testis tissue lysate with IQCF2 antibody at 1 µg/ml.



IQCF2 Antibody 2

Immunohistochemistry of IQCF2 in human testis tissue with IQCF2 antibody at 5 µg/mL.



IQCF2 Antibody 3

Immunofluorescence of IQCF2 in human testis tissue with IQCF2 antibody at 20 µg/ml.

Red: IQCF2 Antibody (8419)
Blue: DAPI staining

Disclaimer

Disclaimer	Optimal dilutions/concentrations should be determined by the end user. The information provided is a guideline for product use. This product is for research use only.
-------------------	--

For research use only. For additional information, visit ProSci's [Terms and Conditions Page](#).