

LANCL2 Antibody

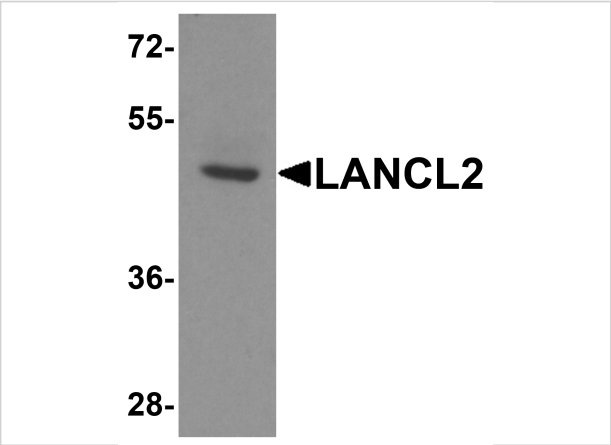
CATALOG NUMBER: 8369

Specifications

Host Species	Rabbit
Species Reactivity	Human, Mouse, Rat
Immunogen	LANCL2 antibody was raised against a 16 amino acid peptide from near the amino terminus of human LANCL2. The immunogen is located within amino acids 30 - 80 of LANCL2.
Conjugate	Unconjugated
Tested Applications	ELISA, IHC-P, WB
User Note	Optimal dilutions for each application to be determined by the researcher.
Specificity	LANCL2 antibody is human, mouse and rat reactive.
Predicted Molecular Weight	Predicted: 50 kDa Observed: 48 kDa

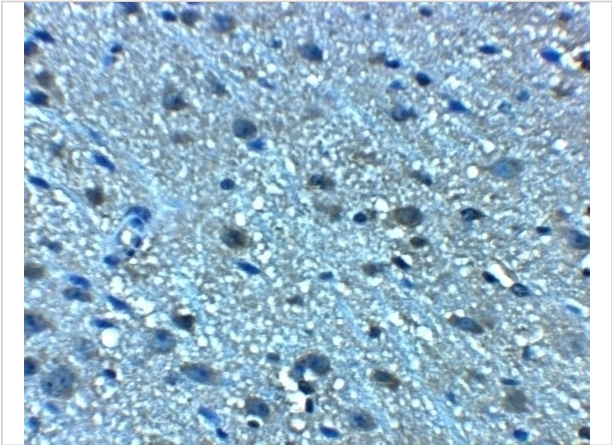
Properties

Purification	LANCL2 Antibody is affinity chromatography purified via peptide column.
Clonality	Polyclonal
Isotype	IgG
Physical State	Liquid
Buffer	LANCL2 Antibody is supplied in PBS containing 0.02% sodium azide.
Concentration	1 mg/mL
Storage Conditions	LANCL2 antibody can be stored at 4°C for three months and -20°C, stable for up to one year.



LANCL2 Antibody 1

Western blot analysis of LANCL2 in human brain tissue lysate with LANCL2 antibody at 1 µg/ml.



LANCL2 Antibody 2

Immunohistochemistry of LANCL2 in mouse brain tissue with LANCL2 antibody at 5 µg/mL.

Disclaimer

Disclaimer	Optimal dilutions/concentrations should be determined by the end user. The information provided is a guideline for product use. This product is for research use only.
------------	--

For research use only. For additional information, visit ProSci's [Terms and Conditions Page](#).