

KIR2DS2 Antibody

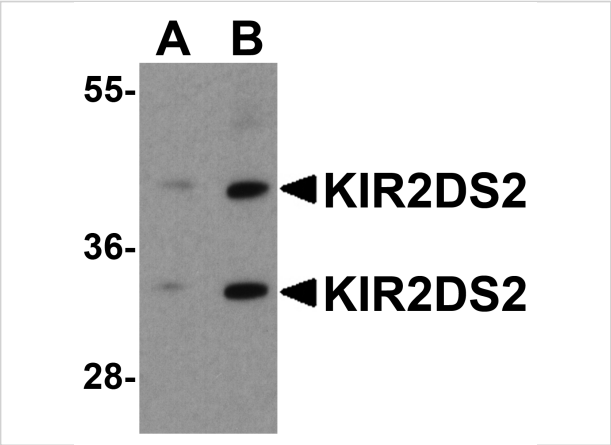
CATALOG NUMBER: 8201

Specifications

Host Species	Rabbit
Species Reactivity	Human
Immunogen	KIR2DS2 antibody was raised against an 18 amino acid peptide near the carboxy terminus of human KIR2DS2. The immunogen is located within the last 50 amino acids of KIR2DS2.
Conjugate	Unconjugated
Tested Applications	ELISA, ICC, IF, WB
User Note	Optimal dilutions for each application to be determined by the researcher.
Specificity	KIR2DS2 antibody is human specific. Multiple isoforms are known to exist.
Predicted Molecular Weight	Predicted: 28, 33, 37 kDa Observed: 34, 42 kDa

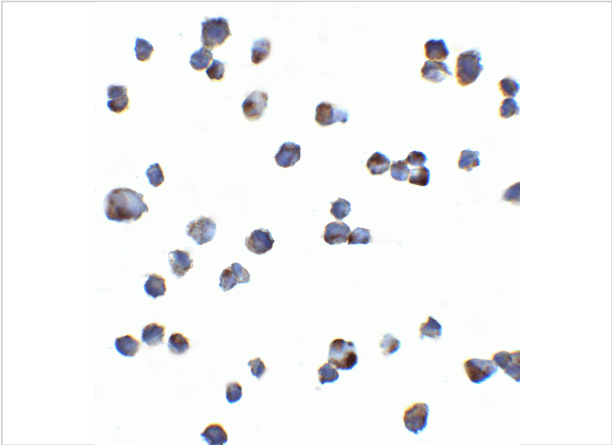
Properties

Purification	KIR2DS2 antibody is affinity chromatography purified via peptide column.
Clonality	Polyclonal
Isotype	IgG
Physical State	Liquid
Buffer	KIR2DS2 antibody is supplied in PBS containing 0.02% sodium azide.
Concentration	1 mg/mL
Storage Conditions	KIR2DS2 antibody can be stored at 4°C for three months and -20°C, stable for up to one year.



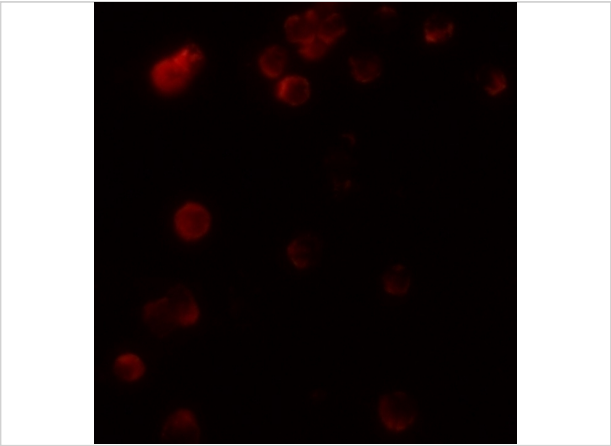
KIR2DS2 Antibody 1

Western blot analysis of KIR2DS2 in 293 cell lysate with KIR2DS2 antibody at (A) 1 and (B) 2 µg/ml.



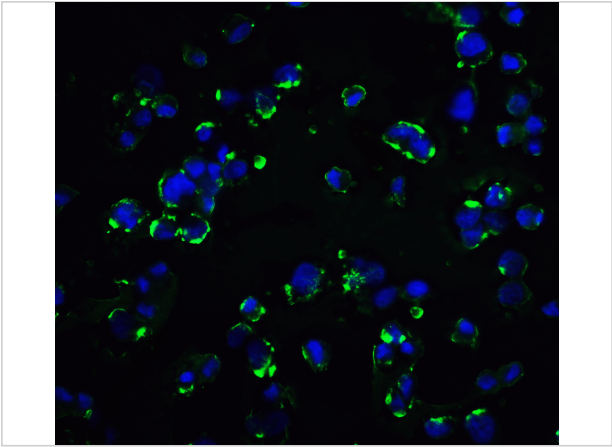
KIR2DS2 Antibody 2

Immunocytochemistry of KIR2DS2 in Hek293 cells with KIR2DS2 antibody at 5 µg/mL.



KIR2DS2 Antibody 3

Immunofluorescence of KIR2DS2 in 293 cells with KIR2DS2 antibody at 20 µg/mL.



KIR2DS2 Antibody 4

Immunofluorescence of KIR2DS2 in Hek293 cells with KIR2DS2 antibody at 20 µg/mL.

Green: KIR2DS2 Antibody (8201)
Blue: DAPI staining

Disclaimer

Disclaimer	Optimal dilutions/concentrations should be determined by the end user. The information provided is a guideline for product use. This product is for research use only.
------------	--

For research use only. For additional information, visit ProSci's [Terms and Conditions Page](#).