

Cbl Antibody

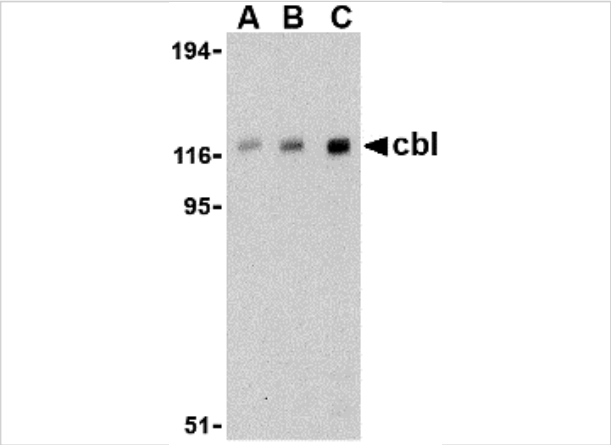
CATALOG NUMBER: 3967

Specifications

Host Species	Rabbit
Species Reactivity	Human, Mouse, Rat
Immunogen	Cbl antibody was raised against a 14 amino acid synthetic peptide from near the carboxy terminus of human cbl. The immunogen is located within amino acids 810 - 860 of Cbl.
Conjugate	Unconjugated
Tested Applications	ELISA, IF, WB
User Note	Optimal dilutions for each application to be determined by the researcher.

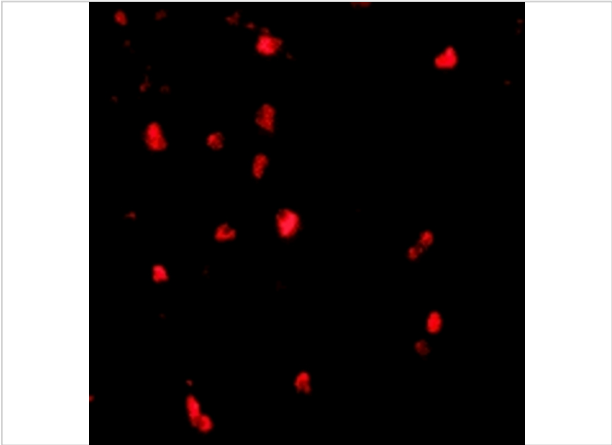
Properties

Purification	Cbl Antibody is affinity chromatography purified via peptide column.
Clonality	Polyclonal
Isotype	IgG
Physical State	Liquid
Buffer	Cbl Antibody is supplied in PBS containing 0.02% sodium azide.
Concentration	1 mg/mL
Storage Conditions	Cbl antibody can be stored at 4°C for three months and -20°C, stable for up to one year. As with all antibodies care should be taken to avoid repeated freeze thaw cycles. Antibodies should not be exposed to prolonged high temperatures.



Cbl Antibody 1

Western blot analysis of cbl in Daudi cell lysate with cbl antibody at (A) 0.5, (B) 1, and (C) 2 µg/mL.



Cbl Antibody 2

Immunofluorescence of cbl in human lymph node tissue with cbl antibody at 20 µg/mL.

Disclaimer

Disclaimer	Optimal dilutions/concentrations should be determined by the end user. The information provided is a guideline for product use. This product is for research use only.
------------	------------------------------------------------------------------------------------------------------------------------------------------------------------------------

For research use only. For additional information, visit ProSci's [Terms and Conditions Page](#).