

## RLN3 Antibody

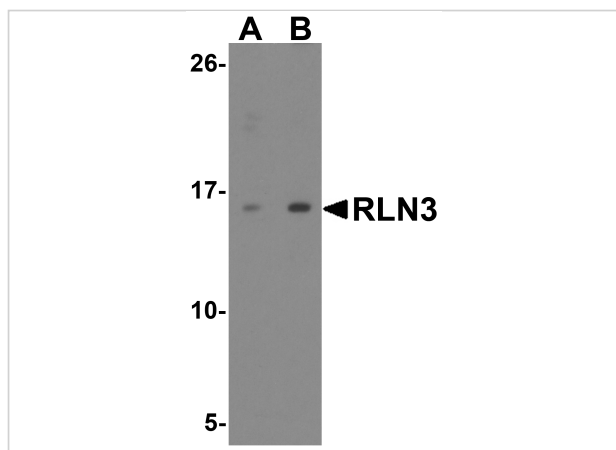
CATALOG NUMBER: 8181

### Specifications

Host Species	Rabbit
Species Reactivity	Human
Homology	Predicted species reactivity based on immunogen sequence: Mouse: (89%), Rat: (84%)
Immunogen	RLN3 antibody was raised against a 19 amino acid peptide near the center of human RLN3. The immunogen is located within amino acids 80 - 130 of RLN3.
Conjugate	Unconjugated
Tested Applications	ELISA, IF, IHC-P, WB
User Note	Optimal dilutions for each application to be determined by the researcher.
Specificity	RLN3 antibody is human specific. RLN3 antibody is predicted to not cross-react with other members of the Relaxin protein family.
Predicted Molecular Weight	Predicted: 16 kDa Observed: 16 kDa

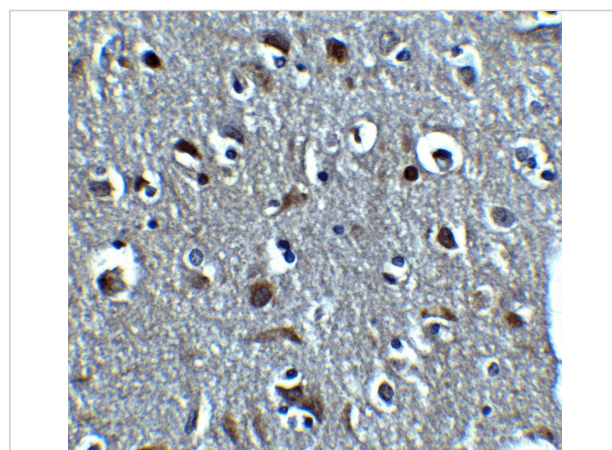
### Properties

Purification	RLN3 antibody is affinity chromatography purified via peptide column.
Clonality	Polyclonal
Isotype	IgG
Physical State	Liquid
Buffer	RLN3 antibody is supplied in PBS containing 0.02% sodium azide.
Concentration	1 mg/mL
Storage Conditions	RLN3 antibody can be stored at 4°C for three months and -20°C, stable for up to one year.



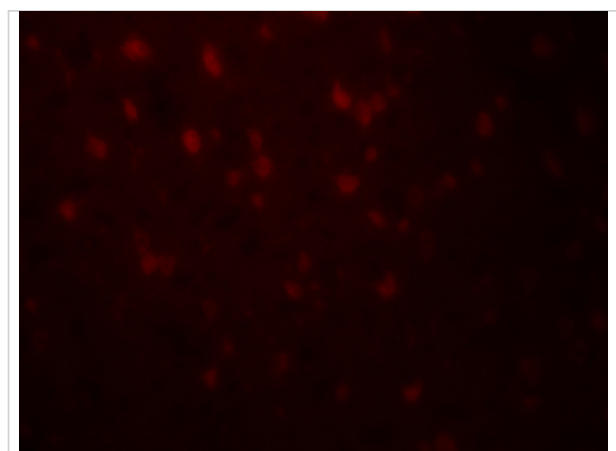
### RLN3 Antibody 1

Western blot analysis of RLN3 in HeLa cell lysate with RLN3 antibody at (A) 1 and (B) 2  $\mu\text{g}/\text{mL}$ .



### RLN3 Antibody 2

Immunohistochemistry of RLN3 in human brain tissue with RLN3 antibody at 5  $\mu\text{g}/\text{mL}$ .



### RLN3 Antibody 3

Immunofluorescence of RLN3 in human brain tissue with RLN3 antibody at 20  $\mu\text{g}/\text{mL}$ .

## Disclaimer

#### Disclaimer

Optimal dilutions/concentrations should be determined by the end user. The information provided is a guideline for product use. This product is for research use only.

For research use only. For additional information, visit ProSci's [Terms and Conditions Page](#).