

WSB1 Antibody

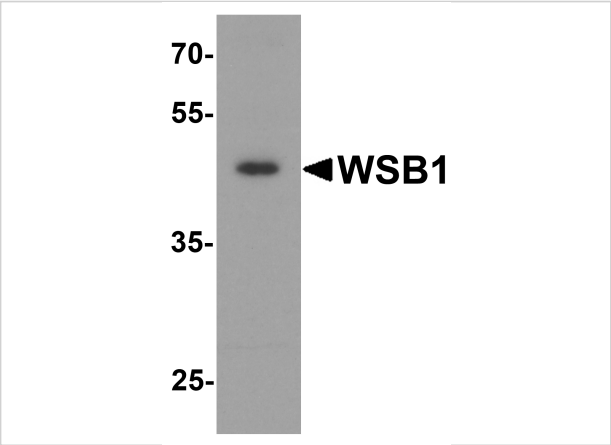
CATALOG NUMBER: 8161

Specifications

| | |
|----------------------------|--|
| Host Species | Rabbit |
| Species Reactivity | Human |
| Homology | Predicted species reactivity based on immunogen sequence: Mouse: (82%) |
| Immunogen | WSB1 antibody was raised against a 16 amino acid peptide near the amino terminus of human WSB1. The immunogen is located within amino acids 70 - 120 of WSB1. |
| Conjugate | Unconjugated |
| Tested Applications | ELISA, IF, IHC-P, WB |
| User Note | Optimal dilutions for each application to be determined by the researcher. |
| Specificity | WSB1 antibody is human specific. |
| Predicted Molecular Weight | Predicted: 46 kDa Observed: 46 kDa |

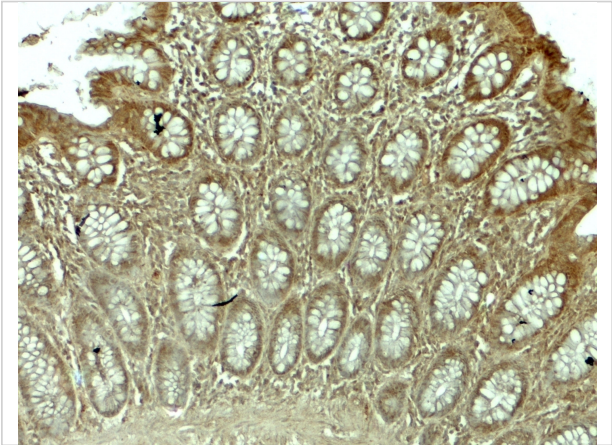
Properties

| | |
|--------------------|---|
| Purification | WSB1 antibody is affinity chromatography purified via peptide column. |
| Clonality | Polyclonal |
| Isotype | IgG |
| Physical State | Liquid |
| Buffer | WSB1 antibody is supplied in PBS containing 0.02% sodium azide. |
| Concentration | 1 mg/mL |
| Storage Conditions | WSB1 antibody can be stored at 4°C for three months and -20°C, stable for up to one year. |



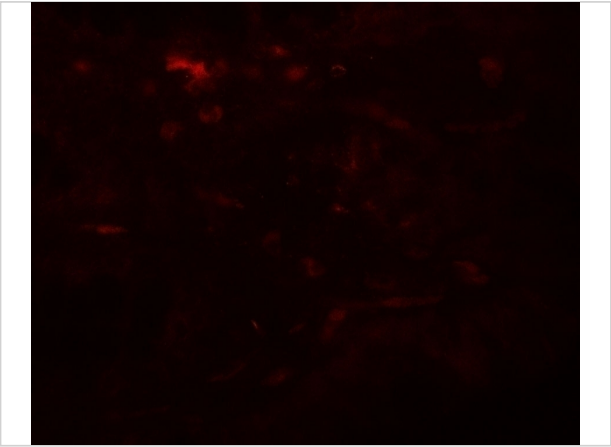
WSB1 Antibody 1

Western blot analysis of WSB1 in human colon tissue lysate with WSB1 antibody at 1 µg/ml.



WSB1 Antibody 2

Immunohistochemistry of WSB1 in human colon tissue with WSB1 antibody at 5 µg/mL.



WSB1 Antibody 3

Immunofluorescence of WSB1 in human colon tissue with WSB1 antibody at 20 µg/mL.

Disclaimer

| | |
|------------|--|
| Disclaimer | Optimal dilutions/concentrations should be determined by the end user. The information provided is a guideline for product use. This product is for research use only. |
|------------|--|

For research use only. For additional information, visit ProSci's [Terms and Conditions Page](#).