

SPIB Antibody

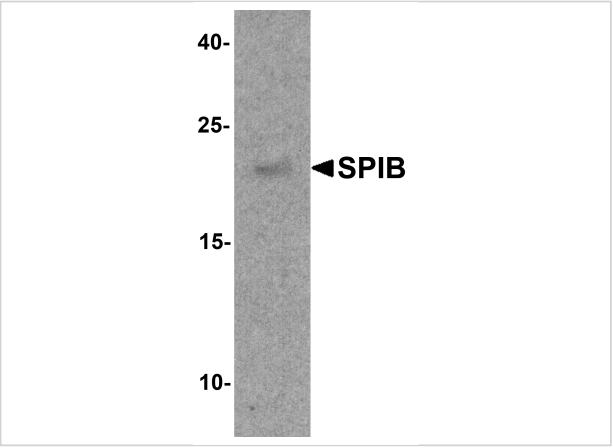
CATALOG NUMBER: 8157

Specifications

Host Species	Rabbit
Species Reactivity	Human, Mouse, Rat
Homology	Predicted species reactivity based on immunogen sequence: Pig: (88%)
Immunogen	SPIB antibody was raised against a 17 amino acid peptide near the carboxy terminus of human SPIB. The immunogen is located within amino acids 200 - 250 of SPIB.
Conjugate	Unconjugated
Tested Applications	ELISA, IF, IHC-P, WB
User Note	Optimal dilutions for each application to be determined by the researcher.
Specificity	SPIB antibody is human, mouse and rat reactive. At least four isoforms of SPIB are known to exist; this antibody will detect all but isoform 3.
Predicted Molecular Weight	Predicted: 19, 25, 29 kDa Observed: 20 kDa

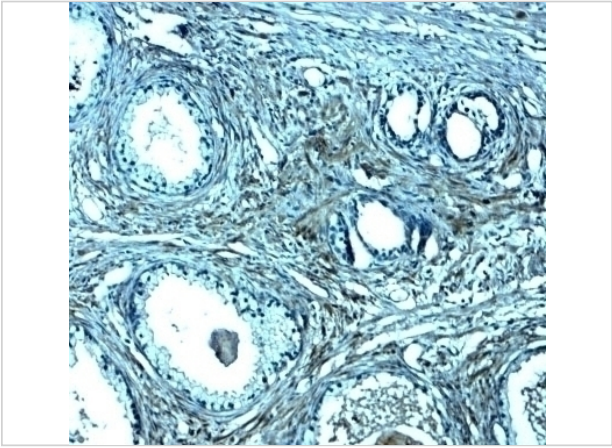
Properties

Purification	SPIB antibody is affinity chromatography purified via peptide column.
Clonality	Polyclonal
Isotype	IgG
Physical State	Liquid
Buffer	SPIB antibody is supplied in PBS containing 0.02% sodium azide.
Concentration	1 mg/mL
Storage Conditions	SPIB antibody can be stored at 4°C for three months and -20°C, stable for up to one year.



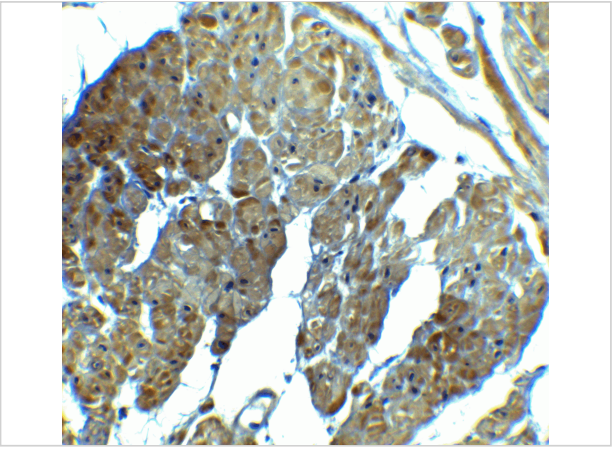
SPIB Antibody 1

Western blot analysis of SPIB in human prostate tissue lysate with SPIB antibody at 1 µg/ml.



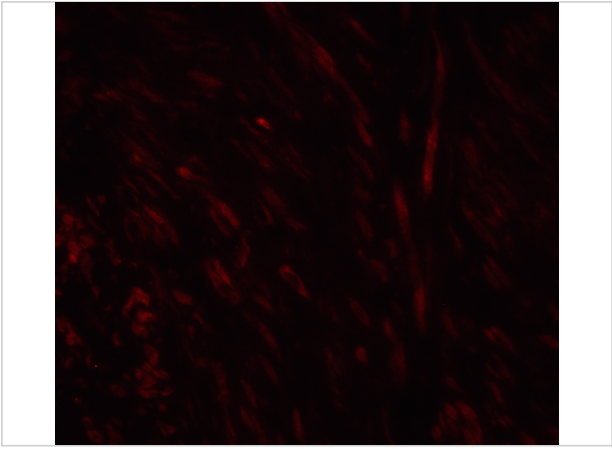
SPIB Antibody 2

Immunohistochemistry of SPIB in human prostate tissue with SPIB antibody at 2.5 µg/mL.



SPIB Antibody 3

Immunohistochemistry of SPIB in human prostate tissue with SPIB antibody at 2.5 µg/mL.



SPIB Antibody 4

Immunofluorescence of SPIB in human prostate tissue with SPIB Antibody at 20 µg/mL.

Disclaimer

Disclaimer	Optimal dilutions/concentrations should be determined by the end user. The information provided is a guideline for product use. This product is for research use only.
------------	--

For research use only. For additional information, visit ProSci's [Terms and Conditions Page](#).