

## HOPX Antibody

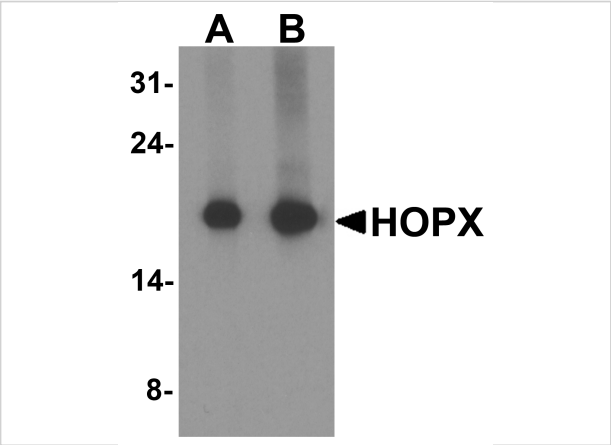
CATALOG NUMBER: 8143

### Specifications

<b>Host Species</b>	Rabbit
<b>Species Reactivity</b>	Human
<b>Homology</b>	Predicted species reactivity based on immunogen sequence: Rat: (88%), Mouse: (88%), Bovine: (88%), Pig: (81%), Chicken: (81%)
<b>Immunogen</b>	HOPX antibody was raised against a 16 amino acid peptide near the amino terminus of human HOPX. The immunogen is located within the first 50 amino acids of HOPX.
<b>Conjugate</b>	Unconjugated
<b>Tested Applications</b>	ELISA, IF, IHC-P, WB
<b>User Note</b>	Optimal dilutions for each application to be determined by the researcher.
<b>Specificity</b>	HOPX antibody is human specific. At least three isoforms of HOPX are known to exist; this antibody will detect all three isoforms.
<b>Predicted Molecular Weight</b>	Predicted: 12 kDa Observed: 18 kDa

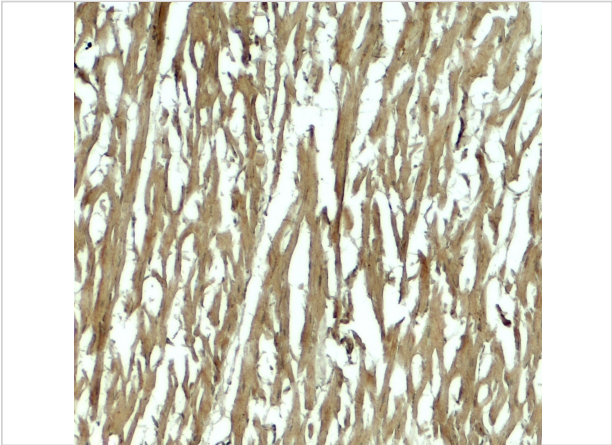
### Properties

<b>Purification</b>	HOPX antibody is affinity chromatography purified via peptide column.
<b>Clonality</b>	Polyclonal
<b>Isotype</b>	IgG
<b>Physical State</b>	Liquid
<b>Buffer</b>	HOPX antibody is supplied in PBS containing 0.02% sodium azide.
<b>Concentration</b>	1 mg/mL
<b>Storage Conditions</b>	HOPX antibody can be stored at 4°C for three months and -20°C, stable for up to one year.



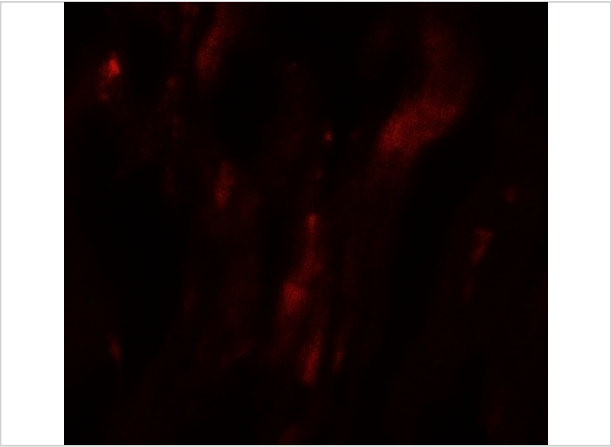
### HOPX Antibody 1

Western blot analysis of HOPX in human brain tissue lysate with HOPX antibody at (A) 1 and (B) 2  $\mu\text{g}/\text{mL}$ .



### HOPX Antibody 2

Immunohistochemistry of HOPX in human heart tissue with HOPX antibody at 5  $\mu\text{g}/\text{mL}$ .



### HOPX Antibody 3

Immunofluorescence of HOPX in human heart tissue with HOPX antibody at 20  $\mu\text{g}/\text{mL}$ .

## Disclaimer

Disclaimer	Optimal dilutions/concentrations should be determined by the end user. The information provided is a guideline for product use. This product is for research use only.
------------	--

For research use only. For additional information, visit ProSci's [Terms and Conditions Page](#).