

CDO1 Antibody

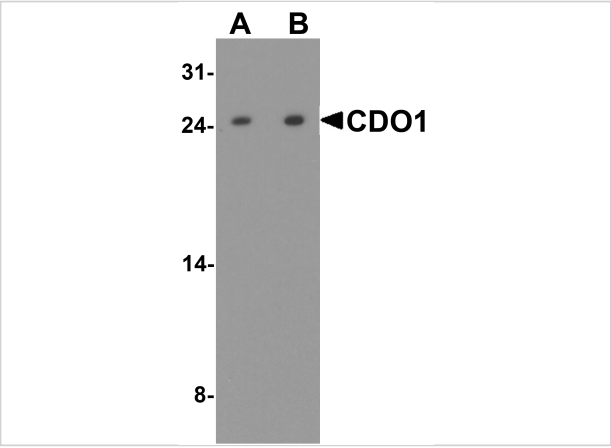
CATALOG NUMBER: 8137

Specifications

Host Species	Rabbit
Species Reactivity	Human, Mouse, Rat
Homology	Predicted species reactivity based on immunogen sequence: Bovine: (84%)
Immunogen	CDO1 antibody was raised against a 19 amino acid peptide near the amino terminus of human CDO1. The immunogen is located within amino acids 30 - 80 of CDO1.
Conjugate	Unconjugated
Tested Applications	ELISA, WB
User Note	Optimal dilutions for each application to be determined by the researcher.
Specificity	CDO1 antibody is human, mouse and rat reactive.
Predicted Molecular Weight	Predicted: 22 kDa Observed: 24 kDa

Properties

Purification	CDO1 antibody is affinity chromatography purified via peptide column.
Clonality	Polyclonal
Isotype	IgG
Physical State	Liquid
Buffer	CDO1 antibody is supplied in PBS containing 0.02% sodium azide.
Concentration	1 mg/mL
Storage Conditions	CDO1 antibody can be stored at 4°C for three months and -20°C, stable for up to one year.



CDO1 Antibody 1

Western blot analysis of CDO1 in rat liver tissue lysate with CDO1 antibody at (A) 1 and (B) 2 µg/ml.

Disclaimer

Disclaimer	Optimal dilutions/concentrations should be determined by the end user. The information provided is a guideline for product use. This product is for research use only.
------------	--

For research use only. For additional information, visit ProSci's [Terms and Conditions Page](#).