

SLC29A2 Antibody

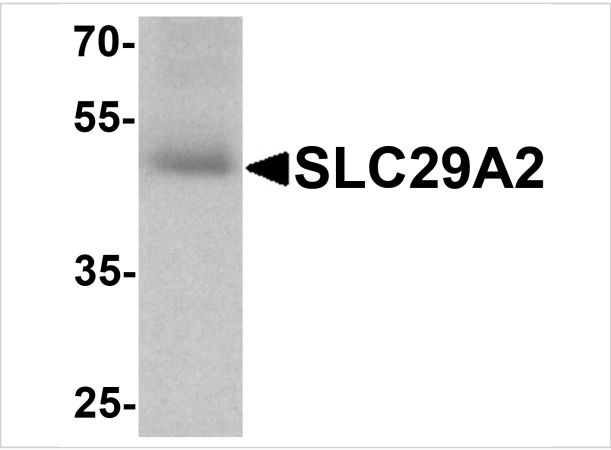
CATALOG NUMBER: 8127

Specifications

Host Species	Rabbit
Species Reactivity	Human
Homology	Predicted species reactivity based on immunogen sequence: Rat: (100%)
Immunogen	SLC29A2 antibody was raised against a 19 amino acid peptide near the center of human SLC29A2. The immunogen is located within amino acids 250 - 300 of SLC29A2.
Conjugate	Unconjugated
Tested Applications	ELISA, IF, IHC-P, WB
User Note	Optimal dilutions for each application to be determined by the researcher.
Specificity	SLC29A2 antibody is human specific. SLC29A2 antibody is predicted to not cross-react with other SLC29 proteins.
Predicted Molecular Weight	Predicted: 50 kDa Observed: 50 kDa

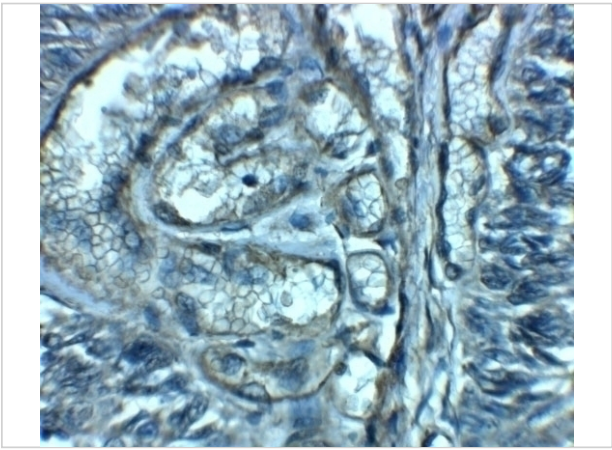
Properties

Purification	SLC29A2 antibody is affinity chromatography purified via peptide column.
Clonality	Polyclonal
Isotype	IgG
Physical State	Liquid
Buffer	SLC29A2 antibody is supplied in PBS containing 0.02% sodium azide.
Concentration	1 mg/mL
Storage Conditions	SLC29A2 antibody can be stored at 4°C for three months and -20°C, stable for up to one year.



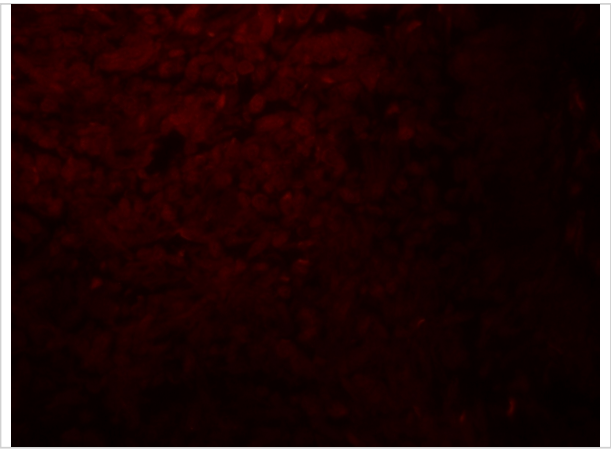
SLC29A2 Antibody 1

Western blot analysis of SLC29A2 in human bladder tissue lysate with SLC29A2 antibody at 1 µg/ml.



SLC29A2 Antibody 2

Immunohistochemistry of SLC29A2 in human bladder tissue with SLC29A2 antibody at 2.5 µg/mL.



SLC29A2 Antibody 3

Immunofluorescence of SLC29A2 in human bladder tissue with SLC29A2 antibody at 20 µg/mL.

Disclaimer

Disclaimer	Optimal dilutions/concentrations should be determined by the end user. The information provided is a guideline for product use. This product is for research use only.
------------	--

For research use only. For additional information, visit ProSci's [Terms and Conditions Page](#).