

CRBN Antibody

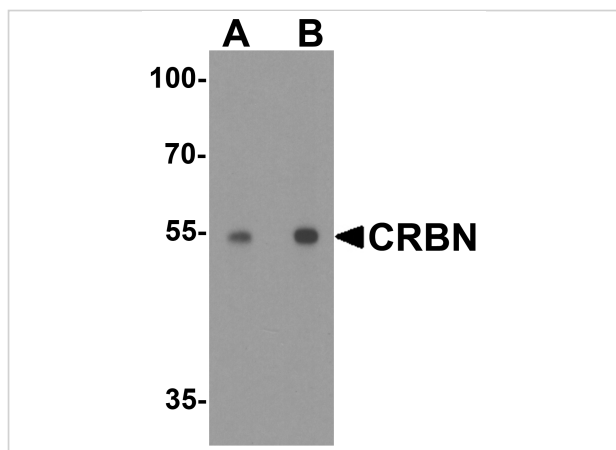
CATALOG NUMBER: 8115

Specifications

Host Species	Rabbit
Species Reactivity	Human, Mouse, Rat
Homology	Predicted species reactivity based on immunogen sequence: Bovine: (94%)
Immunogen	CRBN antibody was raised against a 16 amino acid peptide near the carboxy terminus of human CRBN. The immunogen is located within the last 50 amino acids of CRBN.
Conjugate	Unconjugated
Tested Applications	ELISA, IF, IHC-P, WB
User Note	Optimal dilutions for each application to be determined by the researcher.
Specificity	CRBN antibody is human, mouse and rat reactive. At least two isoforms of CRBN are known to exist; this antibody will detect both isoforms.
Predicted Molecular Weight	Predicted: 49 kDa Observed: 54 kDa

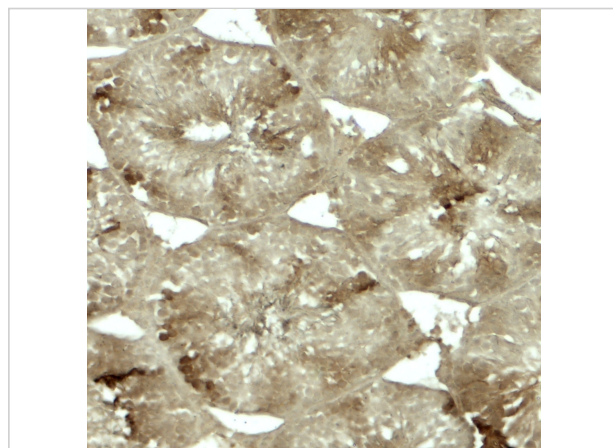
Properties

Purification	CRBN antibody is affinity chromatography purified via peptide column.
Clonality	Polyclonal
Isotype	IgG
Physical State	Liquid
Buffer	CRBN antibody is supplied in PBS containing 0.02% sodium azide.
Concentration	1 mg/mL
Storage Conditions	CRBN antibody can be stored at 4°C up to one year. Antibodies should not be exposed to prolonged high temperatures.



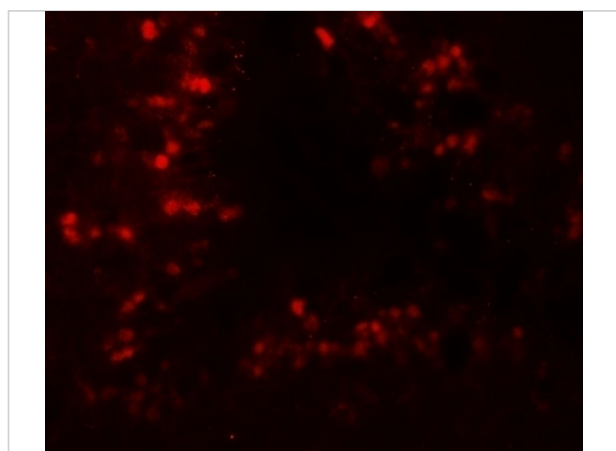
CRBN Antibody 1

Western blot analysis of CRBN in human testis tissue lysate with CRBN antibody at (A) 0.5 and (B) 1 µg/mL.



CRBN Antibody 2

Immunohistochemistry of CRBN in rat testis tissue with CRBN antibody at 5 µg/mL.



CRBN Antibody 3

Immunofluorescence of CRBN in rat testis tissue with CRBN antibody at 20 µg/mL.

Disclaimer

Disclaimer

Optimal dilutions/concentrations should be determined by the end user. The information provided is a guideline for product use. This product is for research use only.

For research use only. For additional information, visit ProSci's [Terms and Conditions Page](#).