

## PRRX1 Antibody

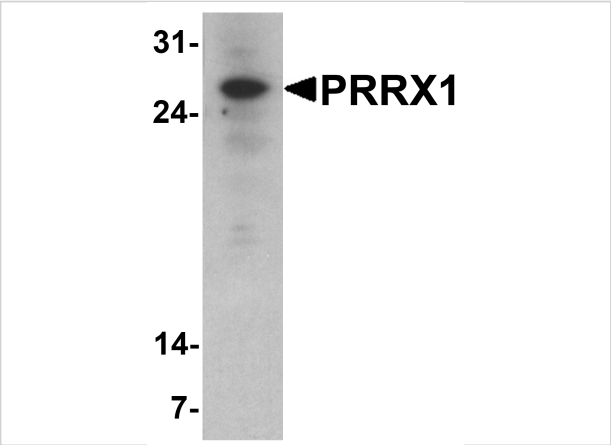
CATALOG NUMBER: 8093

### Specifications

Host Species	Rabbit
Species Reactivity	Human, Mouse, Rat
Homology	Predicted species reactivity based on immunogen sequence: Chicken: (100%)
Immunogen	PRRX1 antibody was raised against a 19 amino acid peptide near the center of human PRRX1. The immunogen is located within amino acids 70 - 120 of PRRX1.
Conjugate	Unconjugated
Tested Applications	ELISA, WB
User Note	Optimal dilutions for each application to be determined by the researcher.
Specificity	PRRX1 antibody is human, mouse and rat reactive. At least two isoforms of PRRX1 are known to exist; this antibody will detect both isoforms.
Predicted Molecular Weight	Predicted: 27 kDa Observed: 26 kDa

### Properties

Purification	PRRX1 antibody is affinity chromatography purified via peptide column.
Clonality	Polyclonal
Isotype	IgG
Physical State	Liquid
Buffer	PRRX1 antibody is supplied in PBS containing 0.02% sodium azide.
Concentration	1 mg/mL
Storage Conditions	PRRX1 antibody can be stored at 4°C for three months and -20°C, stable for up to one year.



PRRX1 Antibody 1

Western blot analysis of PRRX1 in HeLa cell lysate with PRRX1 antibody at 1 µg/ml.

Disclaimer

Disclaimer	Optimal dilutions/concentrations should be determined by the end user. The information provided is a guideline for product use. This product is for research use only.
------------	------------------------------------------------------------------------------------------------------------------------------------------------------------------------

For research use only. For additional information, visit ProSci's [Terms and Conditions Page](#).