

GLIS2 Antibody

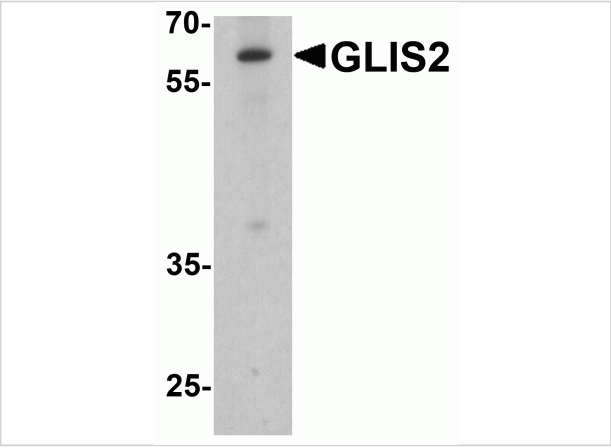
CATALOG NUMBER: 8091

Specifications

Host Species	Rabbit
Species Reactivity	Human, Mouse, Rat
Immunogen	GLIS2 antibody was raised against an 18 amino acid peptide near the center of human GLIS2. The immunogen is located within amino acids 260 - 310 of GLIS2.
Conjugate	Unconjugated
Tested Applications	ELISA, IHC-P, WB
User Note	Optimal dilutions for each application to be determined by the researcher.
Specificity	GLIS2 antibody is human, mouse and rat reactive.
Predicted Molecular Weight	Predicted: 58 kDa Observed: 60 kDa

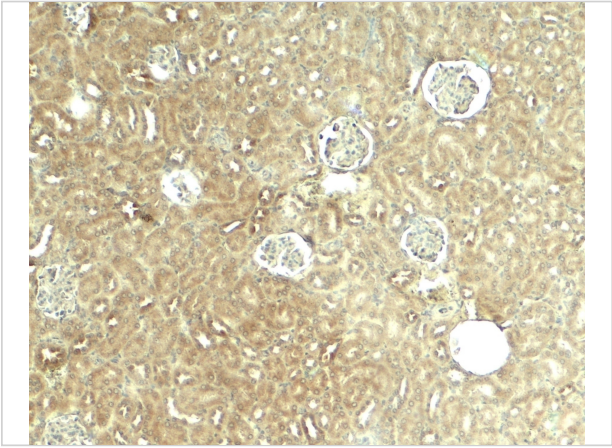
Properties

Purification	GLIS2 antibody is affinity chromatography purified via peptide column.
Clonality	Polyclonal
Isotype	IgG
Physical State	Liquid
Buffer	GLIS2 antibody is supplied in PBS containing 0.02% sodium azide.
Concentration	1 mg/mL
Storage Conditions	GLIS2 antibody can be stored at 4°C for three months and -20°C, stable for up to one year.



GLIS2 Antibody 1

Western blot analysis of GLIS2 in K562 cell lysate with GLIS2 antibody at 1 µg/ml.



GLIS2 Antibody 2

Immunohistochemistry of GLIS2 in mouse kidney tissue with GLIS2 antibody at 5 µg/ml.

Disclaimer

Disclaimer	Optimal dilutions/concentrations should be determined by the end user. The information provided is a guideline for product use. This product is for research use only.
------------	--

For research use only. For additional information, visit ProSci's [Terms and Conditions Page](#).