

SLC1A7 Antibody

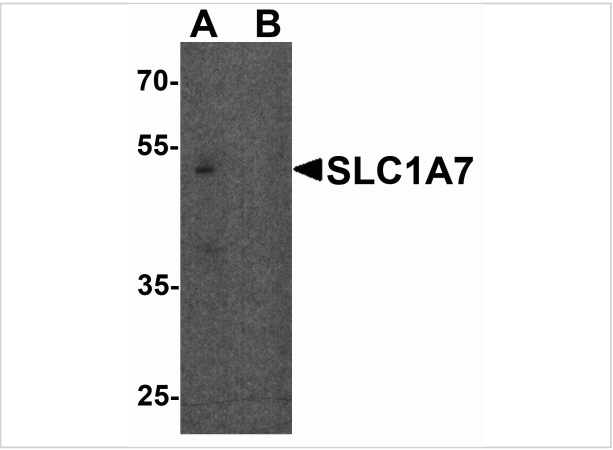
CATALOG NUMBER: 8083

Specifications

Host Species	Rabbit
Species Reactivity	Human, Mouse
Immunogen	SLC1A7 antibody was raised against a 14 amino acid peptide near the carboxy terminus of human SLC1A7. The immunogen is located within amino acids 460 - 510 of SLC1A7.
Conjugate	Unconjugated
Tested Applications	ELISA, IF, IHC-P, WB
User Note	Optimal dilutions for each application to be determined by the researcher.
Specificity	SLC1A7 antibody is human and mouse reactive. Multiple isoforms of SLC1A7 are known to exist.
Predicted Molecular Weight	Predicted: 17, 52, 62, 68 kDa Observed: 52 kDa

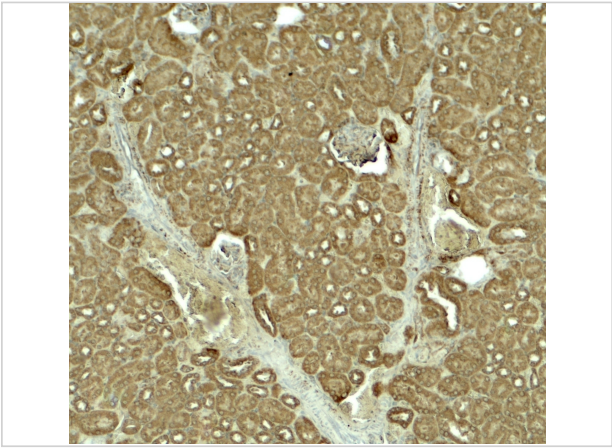
Properties

Purification	SLC1A7 antibody is affinity chromatography purified via peptide column.
Clonality	Polyclonal
Isotype	IgG
Physical State	Liquid
Buffer	SLC1A7 antibody is supplied in PBS containing 0.02% sodium azide.
Concentration	1 mg/mL
Storage Conditions	SLC1A7 antibody can be stored at 4°C for three months and -20°C, stable for up to one year.



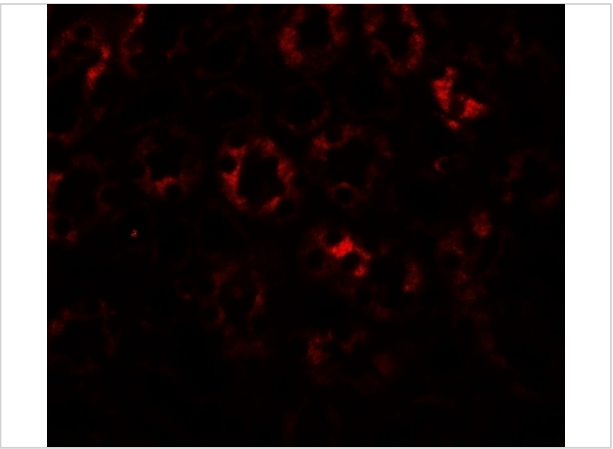
SLC1A7 Antibody 1

Western blot analysis of SLC1A7 in C2C12 cell lysate with SLC1A7 antibody at 1 µg/ml in (A) the absence and (B) the presence of blocking peptide.



SLC1A7 Antibody 2

Immunohistochemistry of SLC1A7 in mouse kidney tissue with SLC1A7 antibody at 5 µg/ml.



SLC1A7 Antibody 3

Immunofluorescence of SLC1A7 in mouse kidney tissue with SLC1A7 antibody at 20 µg/ml.

Disclaimer

Disclaimer	Optimal dilutions/concentrations should be determined by the end user. The information provided is a guideline for product use. This product is for research use only.
------------	--

For research use only. For additional information, visit ProSci's [Terms and Conditions Page](#).