

ATG4A Antibody

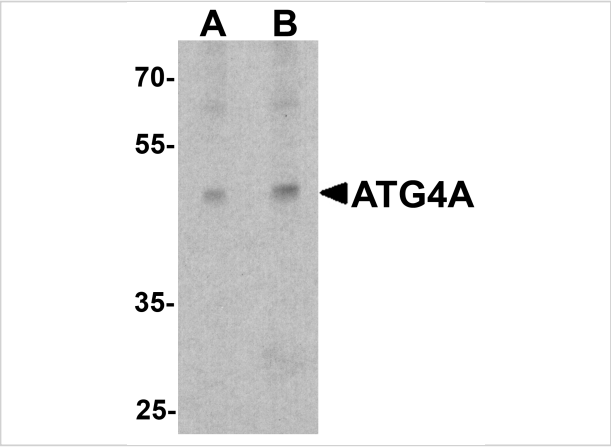
CATALOG NUMBER: 8071

Specifications

Host Species	Rabbit
Species Reactivity	Human, Mouse, Rat
Homology	Predicted species reactivity based on immunogen sequence: Bovine: (100%)
Immunogen	ATG4A antibody was raised against an 18 amino acid peptide near the carboxy terminus of human ATG4A. The immunogen is located within the last 50 amino acids of ATG4A.
Conjugate	Unconjugated
Tested Applications	ELISA, IHC-P, WB
User Note	Optimal dilutions for each application to be determined by the researcher.
Specificity	ATG4A antibody is human, mouse and rat reactive. At least two isoforms of ATG4A are known to exist; this antibody will detect both isoforms. ATG4A is predicted to not cross-react with other ATG4 proteins.
Predicted Molecular Weight	Predicted: 48 kDa Observed: 44 kDa

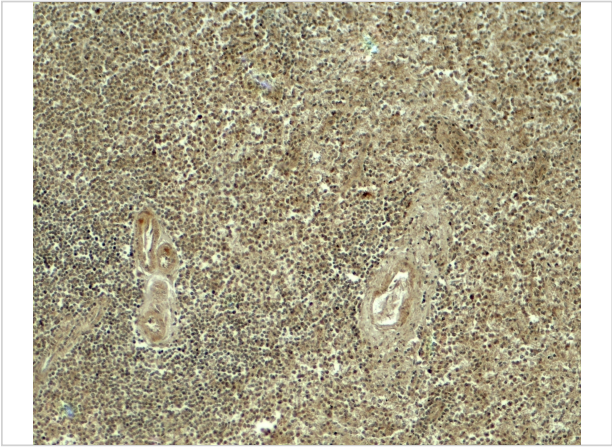
Properties

Purification	ATG4A antibody is affinity chromatography purified via peptide column.
Clonality	Polyclonal
Isotype	IgG
Physical State	Liquid
Buffer	ATG4A antibody is supplied in PBS containing 0.02% sodium azide.
Concentration	1 mg/mL
Storage Conditions	ATG4A antibody can be stored at 4°C for three months and -20°C, stable for up to one year.



ATG4A Antibody 1

Western blot analysis of ATG4A in EL4 cell lysate with ATG4A antibody at (A) 1 and (B) 2 $\mu\text{g/ml}$.



ATG4A Antibody 2

Immunohistochemistry of ATG4A in human spleen tissue with ATG4A antibody at 5 $\mu\text{g/ml}$.

Disclaimer

Disclaimer	Optimal dilutions/concentrations should be determined by the end user. The information provided is a guideline for product use. This product is for research use only.
------------	------------------------------------------------------------------------------------------------------------------------------------------------------------------------

For research use only. For additional information, visit ProSci's [Terms and Conditions Page](#).