

## ATM Antibody

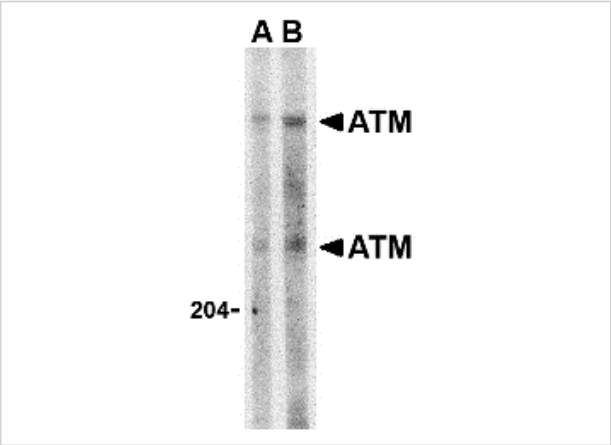
CATALOG NUMBER: 3945

### Specifications

Host Species	Rabbit
Species Reactivity	Human
Homology	Predicted species reactivity based on immunogen sequence: Pig: (86%), Mouse: (71%)
Immunogen	ATM antibody was raised against a peptide corresponding to 14 amino acids near the carboxy terminus of human ATM. The immunogen is located within amino acids 2970 - 3020 of ATM.
Conjugate	Unconjugated
Tested Applications	ELISA, IF, IHC-P, WB
User Note	Optimal dilutions for each application to be determined by the researcher.

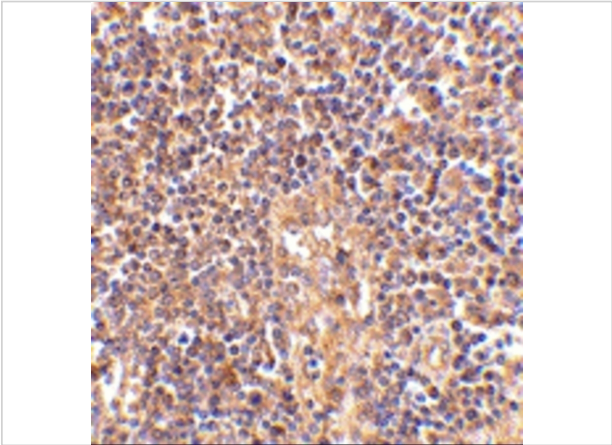
### Properties

Purification	ATM Antibody is affinity chromatography purified via peptide column.
Clonality	Polyclonal
Isotype	IgG
Physical State	Liquid
Buffer	ATM Antibody is supplied in PBS containing 0.02% sodium azide.
Concentration	1 mg/mL
Storage Conditions	ATM antibody can be stored at 4°C for three months and -20°C, stable for up to one year. As with all antibodies care should be taken to avoid repeated freeze thaw cycles. Antibodies should not be exposed to prolonged high temperatures.



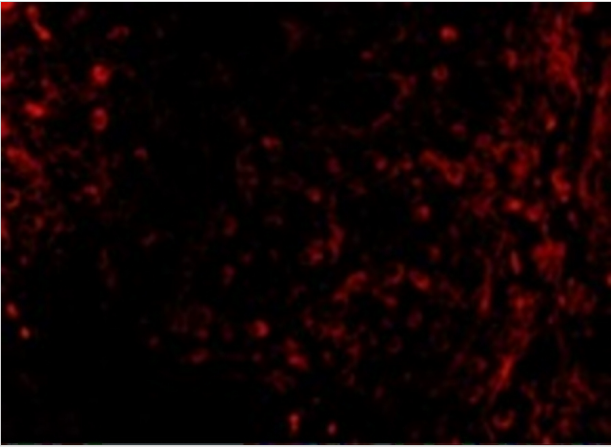
ATM Antibody 1

Western blot analysis of ATM in Daudi whole cell lysate with ATM antibody at (A) 1 and (B) 2  $\mu\text{g/mL}$ .



ATM Antibody 2

Immunohistochemistry of ATM in human lymph node tissue with ATM antibody at 2.5  $\mu\text{g/mL}$ .



ATM Antibody 3

Immunofluorescence of ATM in Human Lymph Node cells with ATM antibody at 10  $\mu\text{g/mL}$ .

Disclaimer

Disclaimer	Optimal dilutions/concentrations should be determined by the end user. The information provided is a guideline for product use. This product is for research use only.
------------	--

For research use only. For additional information, visit ProSci's [Terms and Conditions Page](#).