

IRF7 Antibody

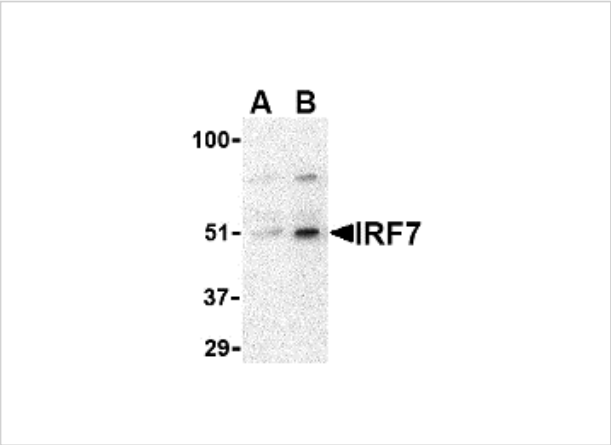
CATALOG NUMBER: 3943

Specifications

Host Species	Rabbit
Species Reactivity	Human
Immunogen	IRF7 antibody was raised against a peptide corresponding to 14 amino acids near the center of human IRF7. The immunogen is located within amino acids 220 - 270 of IRF7.
Conjugate	Unconjugated
Tested Applications	ELISA, IHC-P, WB
User Note	Optimal dilutions for each application to be determined by the researcher.

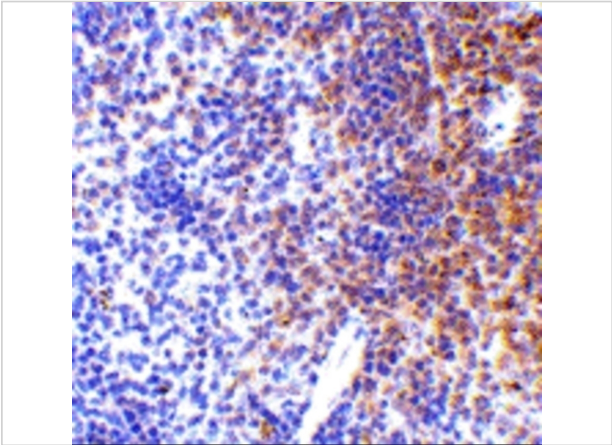
Properties

Purification	IRF7 Antibody is affinity chromatography purified via peptide column.
Clonality	Polyclonal
Isotype	IgG
Physical State	Liquid
Buffer	IRF7 Antibody is supplied in PBS containing 0.02% sodium azide.
Concentration	1 mg/mL
Storage Conditions	IRF7 antibody can be stored at 4°C for three months and -20°C, stable for up to one year. As with all antibodies care should be taken to avoid repeated freeze thaw cycles. Antibodies should not be exposed to prolonged high temperatures.



IRF7 Antibody 1

Western blot analysis of IRF7 in 293 whole cell lysate with IRF7 antibody at (A) 0.5 and (B) 1 µg/mL.



IRF7 Antibody 2

Immunohistochemistry of IRF7 in mouse spleen tissue with IRF7 antibody at 5 µg/mL.

Disclaimer

Disclaimer	Optimal dilutions/concentrations should be determined by the end user. The information provided is a guideline for product use. This product is for research use only.
------------	--

For research use only. For additional information, visit ProSci's [Terms and Conditions Page](#).