

## CACNA1H Antibody

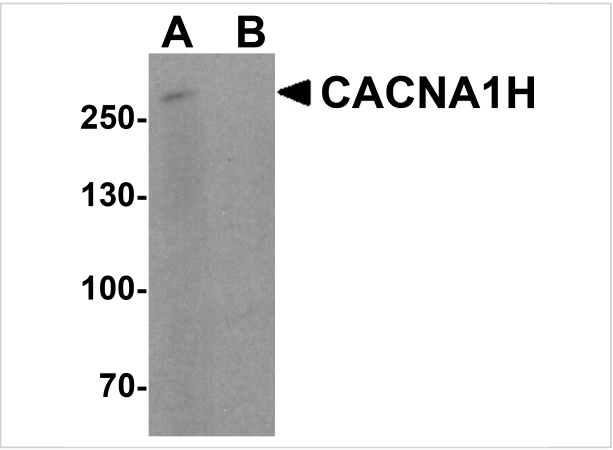
CATALOG NUMBER: 8029

### Specifications

Host Species	Rabbit
Species Reactivity	Human, Mouse, Rat
Immunogen	CACNA1H antibody was raised against a 16 amino acid peptide near the center of human CACNA1H. The immunogen is located within amino acids 1010 - 1060 of CACNA1H.
Conjugate	Unconjugated
Tested Applications	ELISA, IF, IHC-P, WB
User Note	Optimal dilutions for each application to be determined by the researcher.
Specificity	CACNA1H antibody is human, mouse and rat reactive. Multiple isoforms of CACNA1H are known to exist.
Predicted Molecular Weight	Predicted: 259 kDa Observed: 260 kDa

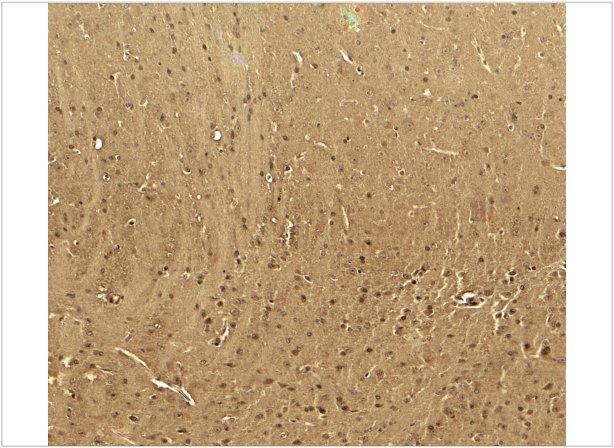
### Properties

Purification	CACNA1H antibody is affinity chromatography purified via peptide column.
Clonality	Polyclonal
Isotype	IgG
Physical State	Liquid
Buffer	CACNA1H antibody is supplied in PBS containing 0.02% sodium azide.
Concentration	1 mg/mL
Storage Conditions	CACNA1H antibody can be stored at 4°C for three months and -20°C, stable for up to one year.



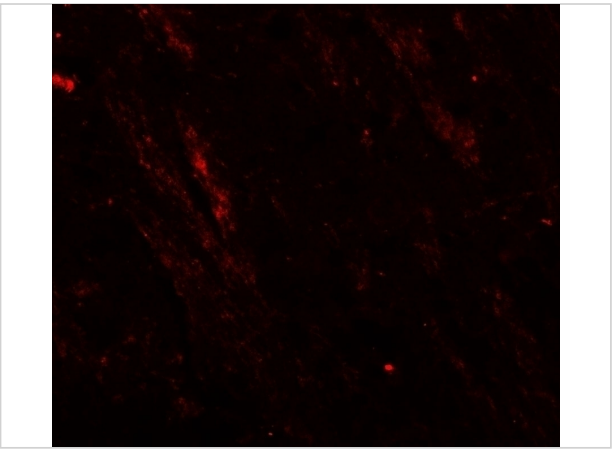
CACNA1H Antibody 1

Western blot analysis of CACNA1H in 293 cell lysate with CACNA1H antibody at 1 µg/ml in (A) the absence and (B) the presence of blocking peptide.



CACNA1H Antibody 2

Immunohistochemistry of CACNA1H in mouse brain tissue with CACNA1H antibody at 5 µg/ml.



CACNA1H Antibody 3

Immunofluorescence of CACNA1H in mouse brain tissue with CACNA1H antibody at 20 µg/ml.

Disclaimer

Disclaimer	Optimal dilutions/concentrations should be determined by the end user. The information provided is a guideline for product use. This product is for research use only.
------------	--

For research use only. For additional information, visit ProSci's [Terms and Conditions Page](#).