

IRF7 Antibody

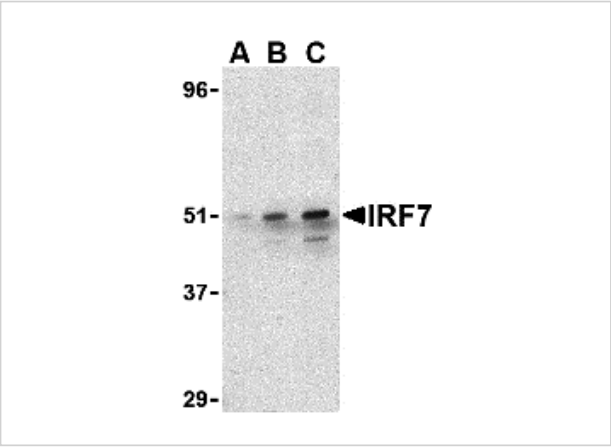
CATALOG NUMBER: 3941

Specifications

| | |
|---------------------|---------------------------------------------------------------------------------------------------------------------------------------------------------------------------------------|
| Host Species | Rabbit |
| Species Reactivity | Human, Mouse, Rat |
| Immunogen | IRF7 antibody was raised against a peptide corresponding to 14 amino acids near the carboxy terminus of human IRF7. The immunogen is located within amino acids 420 - 470 of IRF7. |
| Conjugate | Unconjugated |
| Tested Applications | ELISA, IF, IHC-P, WB |
| User Note | Optimal dilutions for each application to be determined by the researcher. |

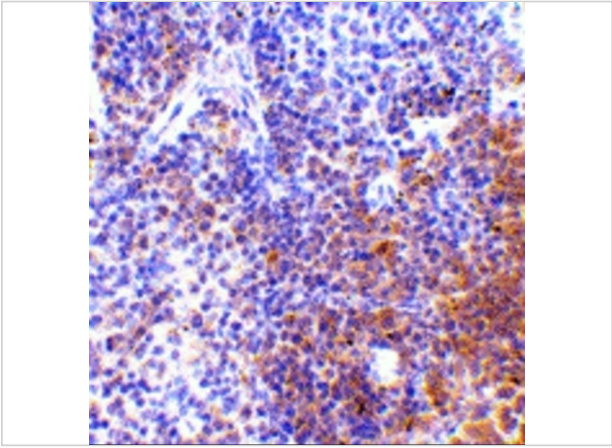
Properties

| | |
|--------------------|----------------------------------------------------------------------------------------------------------------------------------------------------------------------------------------------------------------------------------------------|
| Purification | IRF7 Antibody is affinity chromatography purified via peptide column. |
| Clonality | Polyclonal |
| Isotype | IgG |
| Physical State | Liquid |
| Buffer | IRF7 Antibody is supplied in PBS containing 0.02% sodium azide. |
| Concentration | 1 mg/mL |
| Storage Conditions | IRF7 antibody can be stored at 4°C for three months and -20°C, stable for up to one year. As with all antibodies care should be taken to avoid repeated freeze thaw cycles. Antibodies should not be exposed to prolonged high temperatures. |



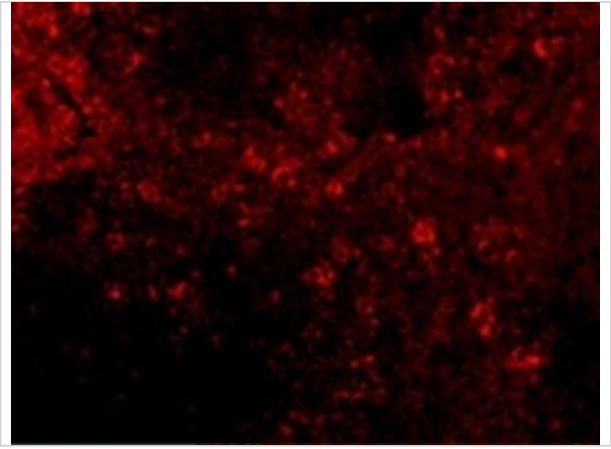
IRF7 Antibody 1

Western blot analysis of IRF7 in 293 whole cell lysate with IRF7 antibody at (A) 0.5, (B) 1, and (C) 2 µg/mL.



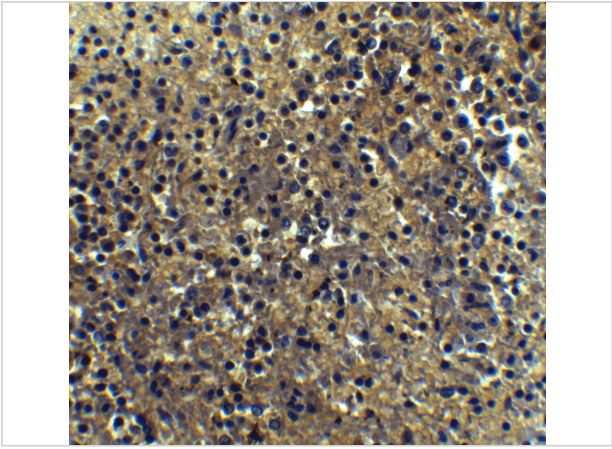
IRF7 Antibody 2

Immunohistochemistry of IRF7 in mouse spleen tissue with IRF7 antibody at 5 µg/mL.



IRF7 Antibody 3

Immunofluorescence of IRF7 in Mouse Spleen cells with IRF7 antibody at 20 µg/mL.



IRF7 Antibody 4

Immunohistochemistry of IRF7 in human spleen tissue with IRF7 Antibody at 5 µg/mL.

Disclaimer

| | |
|-------------------|------------------------------------------------------------------------------------------------------------------------------------------------------------------------|
| Disclaimer | Optimal dilutions/concentrations should be determined by the end user. The information provided is a guideline for product use. This product is for research use only. |
|-------------------|------------------------------------------------------------------------------------------------------------------------------------------------------------------------|

For research use only. For additional information, visit ProSci's [Terms and Conditions Page](#).