

## IQSEC2 Antibody

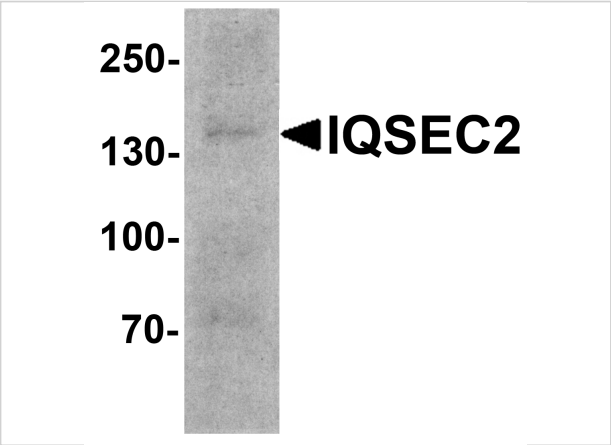
CATALOG NUMBER: 8011

### Specifications

Host Species	Rabbit
Species Reactivity	Human, Mouse, Rat
Immunogen	IQSEC2 antibody was raised against an 18 amino acid peptide near the carboxy terminus of human IQSEC2. The immunogen is located within amino acids 1380 - 1430 of IQSEC2.
Conjugate	Unconjugated
Tested Applications	ELISA, IHC-P, WB
User Note	Optimal dilutions for each application to be determined by the researcher.
Specificity	IQSEC2 antibody is human, mouse and rat reactive. At least two isoforms of IQSEC2 are known to exist; this antibody will only detect the larger isoform. IQSEC2 antibody is predicted to not cross-react with IQSEC1.
Predicted Molecular Weight	Predicted: 104, 133, 141, 164 kDa Observed: 140 kDa

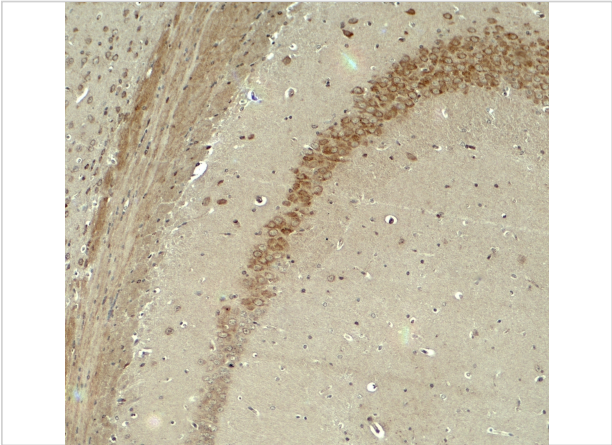
### Properties

Purification	IQSEC2 antibody is affinity chromatography purified via peptide column.
Clonality	Polyclonal
Isotype	IgG
Physical State	Liquid
Buffer	IQSEC2 antibody is supplied in PBS containing 0.02% sodium azide.
Concentration	1 mg/mL
Storage Conditions	IQSEC2 antibody can be stored at 4°C for three months and -20°C, stable for up to one year.



**IQSEC2 Antibody 1**

Western blot analysis of IQSEC2 in SK-N-SH cell lysate with IQSEC2 antibody at 1 µg/ml.



**IQSEC2 Antibody 2**

Immunohistochemistry of IQSEC2 in mouse brain tissue with IQSEC2 antibody at 5 µg/ml.

**Disclaimer**

<b>Disclaimer</b>	Optimal dilutions/concentrations should be determined by the end user. The information provided is a guideline for product use. This product is for research use only.
-------------------	--

For research use only. For additional information, visit ProSci's [Terms and Conditions Page](#).