

IQSEC1 Antibody

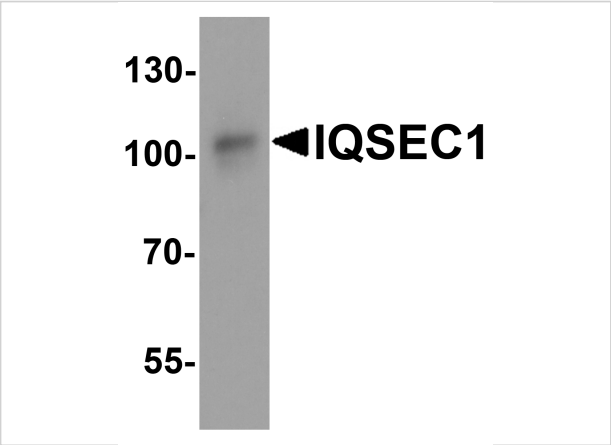
CATALOG NUMBER: 8009

Specifications

| | |
|----------------------------|--|
| Host Species | Rabbit |
| Species Reactivity | Human, Mouse, Rat |
| Immunogen | IQSEC1 antibody was raised against a 19 amino acid peptide near the amino terminus of human IQSEC1. The immunogen is located within amino acids 60 - 110 of IQSEC1. |
| Conjugate | Unconjugated |
| Tested Applications | ELISA, ICC, IF, WB |
| User Note | Optimal dilutions for each application to be determined by the researcher. |
| Specificity | IQSEC1 antibody is human, mouse and rat reactive. At least four isoforms of IQSEC1 are known to exist. IQSEC1 antibody is predicted to not cross-react with IQSEC2. |
| Predicted Molecular Weight | Predicted: 106 kDa Observed: 103 kDa |

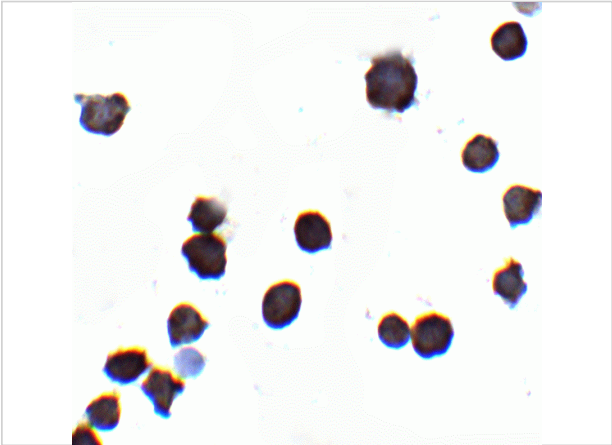
Properties

| | |
|--------------------|---|
| Purification | IQSEC1 antibody is affinity chromatography purified via peptide column. |
| Clonality | Polyclonal |
| Isotype | IgG |
| Physical State | Liquid |
| Buffer | IQSEC1 antibody is supplied in PBS containing 0.02% sodium azide. |
| Concentration | 1 mg/mL |
| Storage Conditions | IQSEC1 antibody can be stored at 4°C for three months and -20°C, stable for up to one year. |



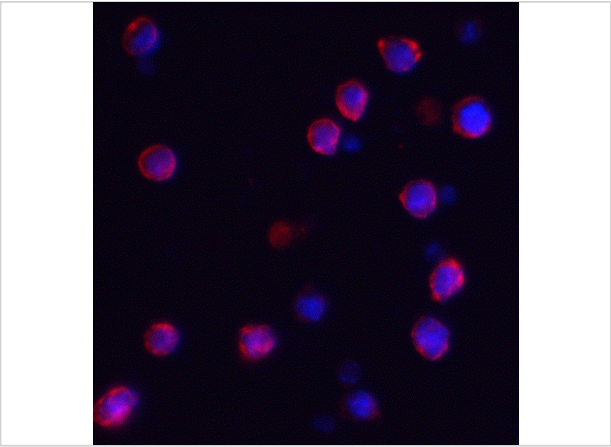
IQSEC1 Antibody 1

Western blot analysis of IQSEC1 in A20 cell lysate with IQSEC1 antibody at 1 µg/ml.



IQSEC1 Antibody 2

Immunocytochemistry of IQSEC1 in A-20 cells with IQSEC1 antibody at 2 µg/mL.



IQSEC1 Antibody 3

Immunofluorescence of IQSEC1 in A-20 cells with IQSEC1 antibody at 2 µg/mL.

Red: IQSEC1 Antibody (8009)
Blue: DAPI staining

Disclaimer

| | |
|-------------------|--|
| Disclaimer | Optimal dilutions/concentrations should be determined by the end user. The information provided is a guideline for product use. This product is for research use only. |
|-------------------|--|

For research use only. For additional information, visit ProSci's [Terms and Conditions Page](#).