

## SAMHD1 Antibody

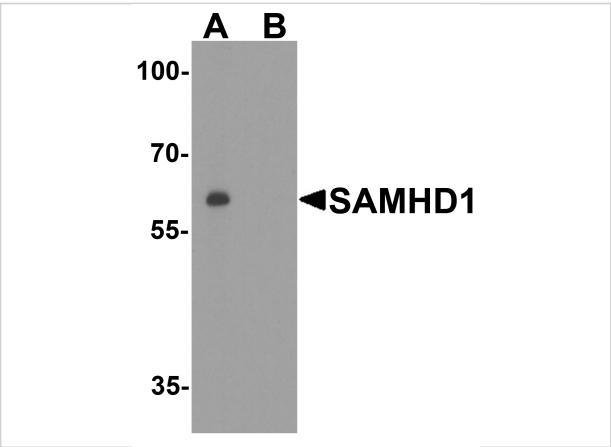
CATALOG NUMBER: 8007

### Specifications

Host Species	Rabbit
Species Reactivity	Human, Mouse
Immunogen	Anti-SAMHD1 antibody ( <b>8007</b> ) was raised against a peptide corresponding to 18 amino acids near the carboxy terminus of human SAMHD1.
Conjugate	Unconjugated
Tested Applications	ELISA, IF, IHC, WB
User Note	Optimal dilutions for each application to be determined by the researcher.
Specificity	SAMHD1 antibody is human and mouse reactive.
Predicted Molecular Weight	Predicted: 72kD Observed: 72 kD

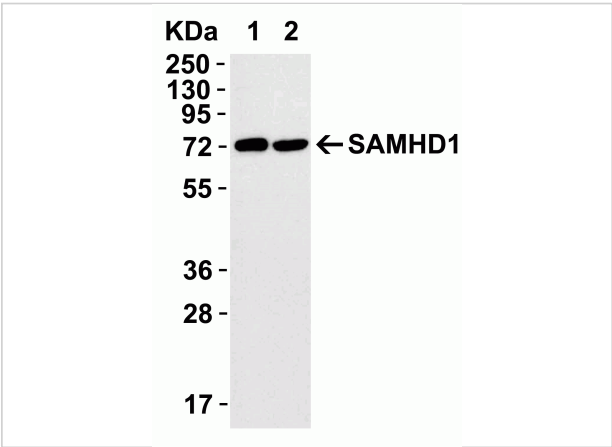
### Properties

Purification	SAMHD1 antibody is affinity chromatography purified via peptide column.
Clonality	Polyclonal
Isotype	IgG
Physical State	Liquid
Buffer	SAMHD1 antibody is supplied in PBS containing 0.02% sodium azide.
Concentration	1 mg/mL
Storage Conditions	SAMHD1 antibody can be stored at 4°C for three months and -20°C, stable for up to one year.



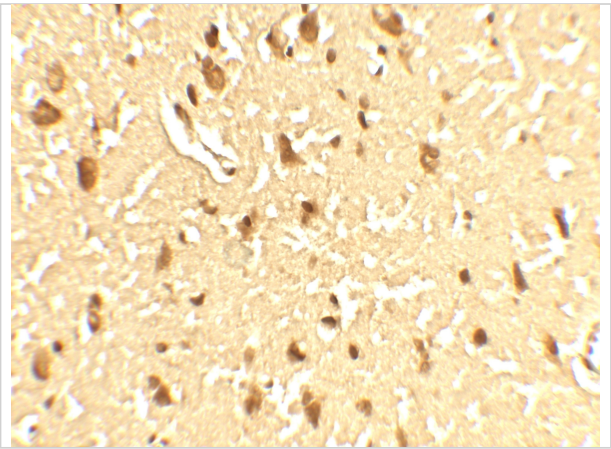
### SAMHD1 Antibody 1

**Figure 1 Western Blot Validation in Human Daudi Cell Lines**  
 Loading: 15 µg of lysates per lane. Antibodies: SAMHD1 8007, 1 µg/mL, in (A: the absence and B: the presence of blockin...



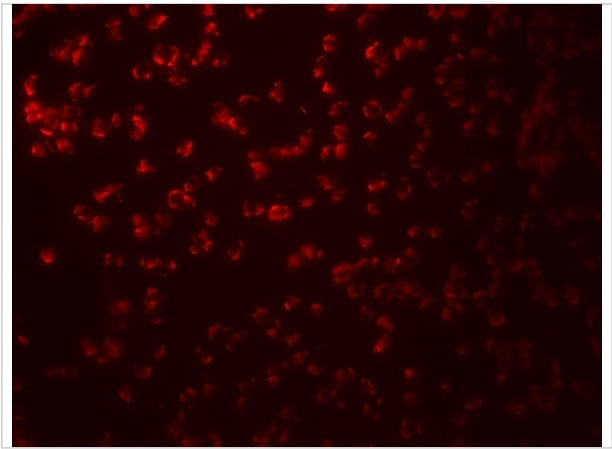
### SAMHD1 Antibody 2

**Figure 2 Overexpression Validation in 293T Transfected Cells**  
 Loading: 15 µg of lysates per lane. Antibodies: SAMHD1 8007 (0.1 µg/mL), (1h incubation at RT in 5% NFDm/TBST. Second...



### SAMHD1 Antibody 3

**Figure 3 Immunohistochemistry Validation of SAMHD1 in Human Brain Tissue**  
 Immunohistochemical analysis of paraffin-embedded Human Brain Tissue using anti- SAMHD1 antibody (8007...



### SAMHD1 Antibody 4

**Figure 4 Immunofluorescence Validation of SAMHD1 in Human Daudi cells**  
 Immunofluorescent analysis of 4% paraformaldehyde-fixed Human Daudi Cells labeling SAMHD1 with 8007 at 20 µ...

## Disclaimer

<b>Disclaimer</b>	Optimal dilutions/concentrations should be determined by the end user. The information provided is a guideline for product use. This product is for research use only.
-------------------	--

For research use only. For additional information, visit ProSci's [Terms and Conditions Page](#).