

## SAMHD1 (phospho Thr592) Antibody

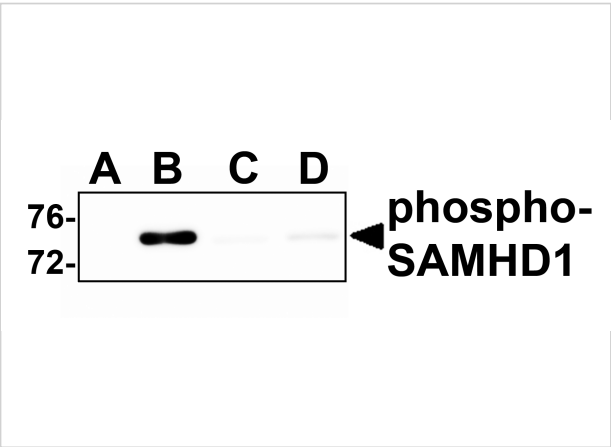
CATALOG NUMBER: 8005

### Specifications

Host Species	Rabbit
Species Reactivity	Human, Mouse
Immunogen	Anti-SAMHD1 (phospho Thr592) antibody ( <b>8005</b> ) was raised against a phosphorylated peptide corresponding to 18 amino acids near the carboxy terminus of human Phospho-SAMHD1 surrounding T592.
Conjugate	Unconjugated
Tested Applications	ELISA, IF, IHC, WB
User Note	Optimal dilutions for each application to be determined by the researcher.
Specificity	Phospho-SAMHD1 antibody will only detect the phosphorylated form of SAMHD1.
Predicted Molecular Weight	Predicted: 72kD Observed: 72 kD

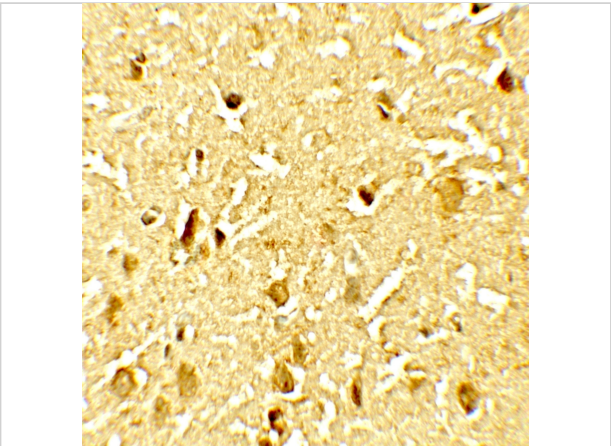
### Properties

Purification	SAMHD1 (phospho Thr592) antibody is affinity chromatography purified via peptide column.
Clonality	Polyclonal
Isotype	IgG
Physical State	Liquid
Buffer	SAMHD1 (phospho Thr592) antibody is supplied in PBS containing 0.02% sodium azide.
Concentration	1 mg/mL
Storage Conditions	SAMHD1 (phospho Thr592) antibody can be stored at 4°C for three months and -20°C, stable for up to one year.



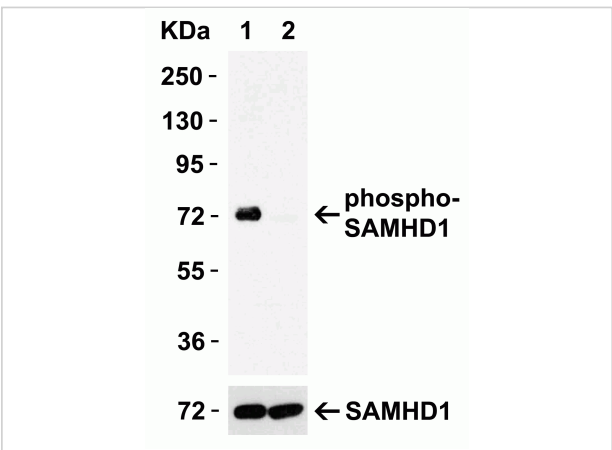
### SAMHD1 (phospho Thr592) Antibody 1

**Figure 1 Western Blot Validation in Human 293 Cells**  
 Loading: 15 µg of lysates per lane. Antibodies: SAMHD1 (phospho Thr592) 8005 (1 µg/mL), (1h incubation at RT in 5% NFDM/TBST.S...



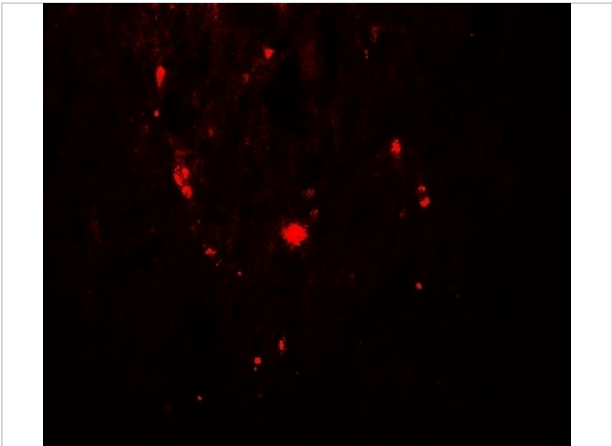
### SAMHD1 (phospho Thr592) Antibody 3

**Figure 3 Immunohistochemistry Validation of SAMHD1 (phospho Thr592) in Human Brain Tissue**  
 Immunohistochemical analysis of paraffin-embedded Human Brain Tissue using anti- SAMH...



### SAMHD1 (phospho Thr592) Antibody 2

**Figure 2 Mutant Validation in 293T Transfected Cells**  
 Loading: 15 µg of lysates per lane. Antibodies: SAMHD1 (phospho Thr592) 8005 (0.05 µg/mL), (1h incubation at RT in 5% NFDM/TB...



### SAMHD1 (phospho Thr592) Antibody 4

**Figure 4 Immunofluorescence Validation of SAMHD1 (phospho Thr592) in Human Brain Tissue**  
 Immunofluorescent analysis of 4% paraformaldehyde-fixed Human Brain Tissue labeling phospho...

## Disclaimer

<b>Disclaimer</b>	Optimal dilutions/concentrations should be determined by the end user. The information provided is a guideline for product use. This product is for research use only.
-------------------	--

For research use only. For additional information, visit ProSci's [Terms and Conditions Page](#).