

GPRASP1 Antibody

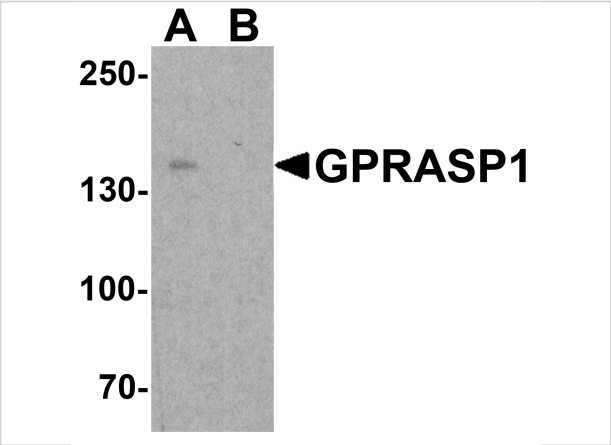
CATALOG NUMBER: 7987

Specifications

Host Species	Rabbit
Species Reactivity	Human, Mouse
Immunogen	GPRASP1 antibody was raised against a 15 amino acid peptide near the amino terminus of human GPRASP1. The immunogen is located within amino acids 260 - 310 of GPRASP1.
Conjugate	Unconjugated
Tested Applications	ELISA, IF, IHC-P, WB
User Note	Optimal dilutions for each application to be determined by the researcher.
Specificity	GPRASP1 antibody is human and mouse reactive. This antibody is predicted to not cross-react with GPRASP2.
Predicted Molecular Weight	Predicted: 153 kDa Observed: 150 kDa

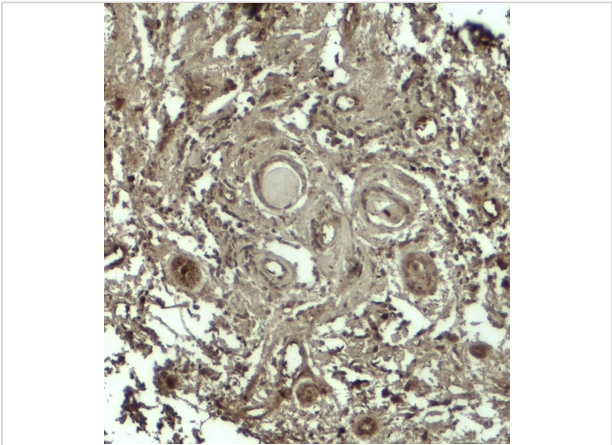
Properties

Purification	GPRASP1 antibody is affinity chromatography purified via peptide column.
Clonality	Polyclonal
Isotype	IgG
Physical State	Liquid
Buffer	GPRASP1 antibody is supplied in PBS containing 0.02% sodium azide.
Concentration	1 mg/mL
Storage Conditions	GPRASP1 antibody can be stored at 4°C for three months and -20°C, stable for up to one year.



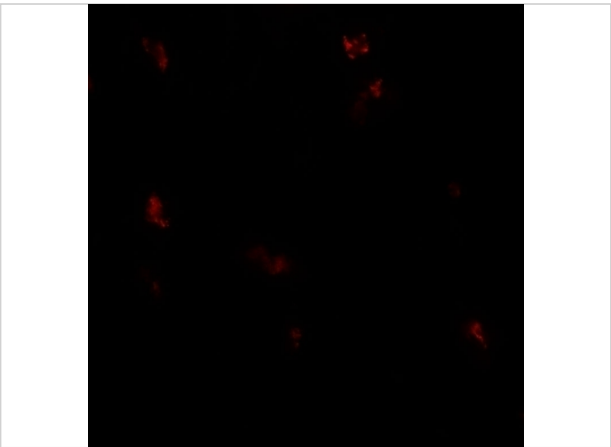
GPRASP1 Antibody 1

Western blot analysis of GPRASP1 in A-20 cell lysate with GPRASP1 antibody at 1 µg/ml in (A) the absence and (B) the presence of blocking peptide.



GPRASP1 Antibody 2

Immunohistochemistry of GPRASP1 in human breast carcinoma tissue with GPRASP12 antibody at 5 µg/ml.



GPRASP1 Antibody 3

Immunofluorescence of GPRASP1 in human breast carcinoma tissue with GPRASP1 antibody at 20 µg/ml.

Disclaimer

Disclaimer	Optimal dilutions/concentrations should be determined by the end user. The information provided is a guideline for product use. This product is for research use only.
------------	--

For research use only. For additional information, visit ProSci's [Terms and Conditions Page](#).