

## XKR8 Antibody

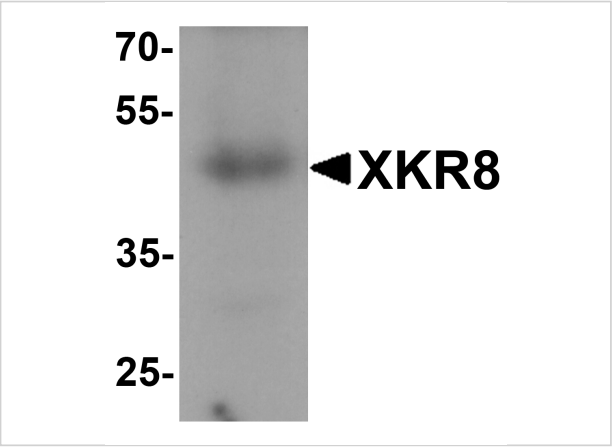
CATALOG NUMBER: 7965

### Specifications

Host Species	Rabbit
Species Reactivity	Human
Immunogen	XKR8 antibody was raised against a 15 amino acid peptide near the carboxy terminus of human XKR8. The immunogen is located within the last 50 amino acids of XKR8.
Conjugate	Unconjugated
Tested Applications	ELISA, IF, IHC-P, WB
User Note	Optimal dilutions for each application to be determined by the researcher.
Specificity	XKR8 antibody is human reactive. At least two isoforms are known to exist; this antibody will detect both isoforms.
Predicted Molecular Weight	Predicted: 43 kDa Observed: 47 kDa

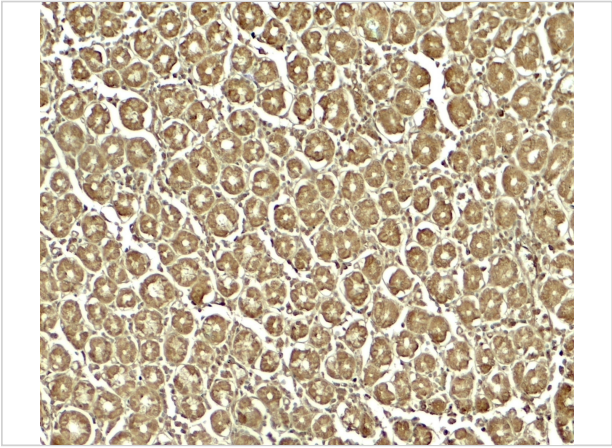
### Properties

Purification	XKR8 antibody is affinity chromatography purified via peptide column.
Clonality	Polyclonal
Isotype	IgG
Physical State	Liquid
Buffer	XKR8 antibody is supplied in PBS containing 0.02% sodium azide.
Concentration	1 mg/mL
Storage Conditions	XKR8 antibody can be stored at 4°C for three months and -20°C, stable for up to one year.



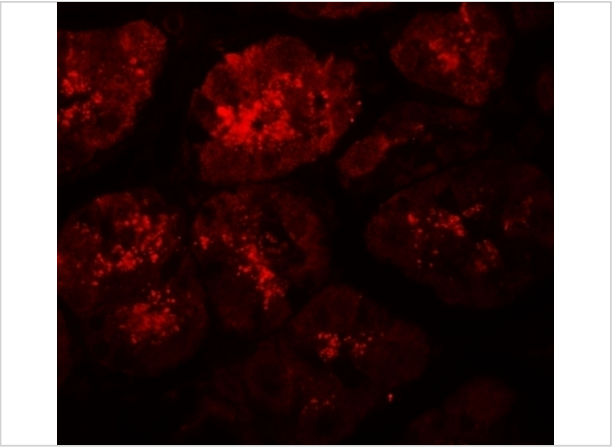
**XKR8 Antibody 1**

Western blot analysis of XKR8 in human stomach tissue lysate with XKR8 antibody at 1 µg/ml.



**XKR8 Antibody 2**

Immunohistochemistry of XKR8 in human stomach tissue with XKR8 antibody at 5 µg/ml.



**XKR8 Antibody 3**

Immunofluorescence of XKR8 in human stomach tissue with XKR8 antibody at 20 µg/ml.

**Disclaimer**

<b>Disclaimer</b>	Optimal dilutions/concentrations should be determined by the end user. The information provided is a guideline for product use. This product is for research use only.
-------------------	--

For research use only. For additional information, visit ProSci's [Terms and Conditions Page](#).