

SMURF1 Antibody

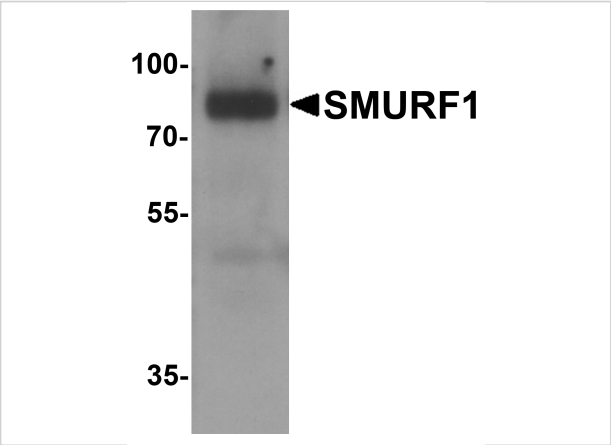
CATALOG NUMBER: 7945

Specifications

Host Species	Rabbit
Species Reactivity	Human, Mouse, Rat
Immunogen	SMURF1 antibody was raised against a 16 amino acid peptide near the amino terminus of human SMURF1. The immunogen is located within amino acids 180 - 230 of SMURF1.
Conjugate	Unconjugated
Tested Applications	ELISA, IHC-P, WB
User Note	Optimal dilutions for each application to be determined by the researcher.
Specificity	SMURF1 antibody is human, mouse and rat reactive. At least three isoforms of SMURF1 are known to exist this antibody will recognize all three isoforms. SMURF1 is predicted to not cross-react with SMURF2.
Predicted Molecular Weight	Predicted: 80, 83 kDa Observed: 78 kDa

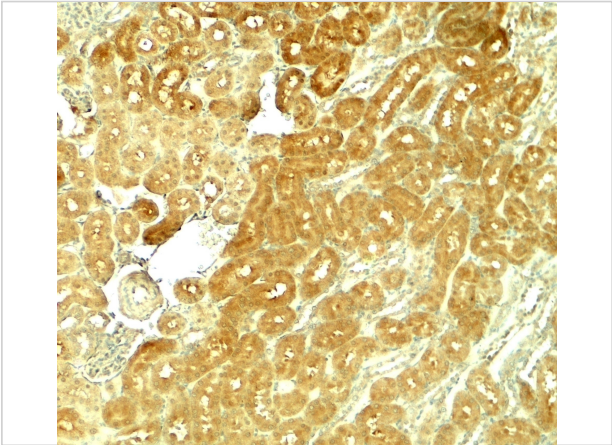
Properties

Purification	SMURF1 antibody is affinity chromatography purified via peptide column.
Clonality	Polyclonal
Isotype	IgG
Physical State	Liquid
Buffer	SMURF1 antibody is supplied in PBS containing 0.02% sodium azide.
Concentration	1 mg/mL
Storage Conditions	SMURF1 antibody can be stored at 4°C for three months and -20°C, stable for up to one year.



SMURF1 Antibody 1

Western blot analysis of SMURF1 in 293 cell lysate with SMURF1 antibody at 1 µg/ml.



SMURF1 Antibody 2

Immunohistochemistry of SMURF1 in rat kidney tissue with SMURF1 antibody at 5 µg/ml.

Disclaimer

Disclaimer	Optimal dilutions/concentrations should be determined by the end user. The information provided is a guideline for product use. This product is for research use only.
------------	--

For research use only. For additional information, visit ProSci's [Terms and Conditions Page](#).