

Rubicon Antibody

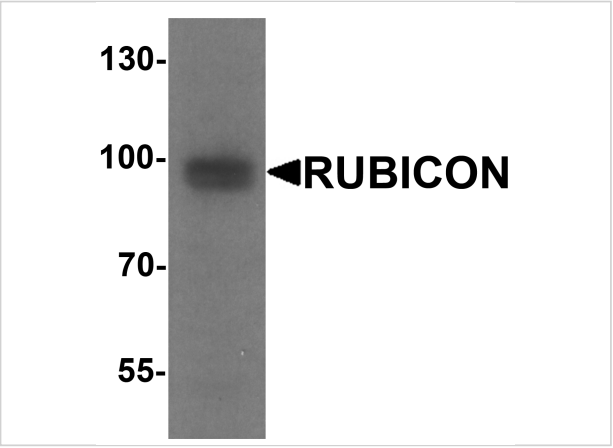
CATALOG NUMBER: 7943

Specifications

Host Species	Rabbit
Species Reactivity	Human, Mouse, Rat
Immunogen	Rubicon antibody was raised against a 16 amino acid peptide near the amino terminus of human Rubicon. The immunogen is located within amino acids 240 - 290 of Rubicon.
Conjugate	Unconjugated
Tested Applications	ELISA, IF, IHC-P, WB
User Note	Optimal dilutions for each application to be determined by the researcher.
Specificity	Rubicon antibody is human, mouse and rat reactive. Multiple isoforms of Rubicon are known to exist.
Predicted Molecular Weight	Predicted: 90, 101, 109 kDa Observed: 91, 99 kDa

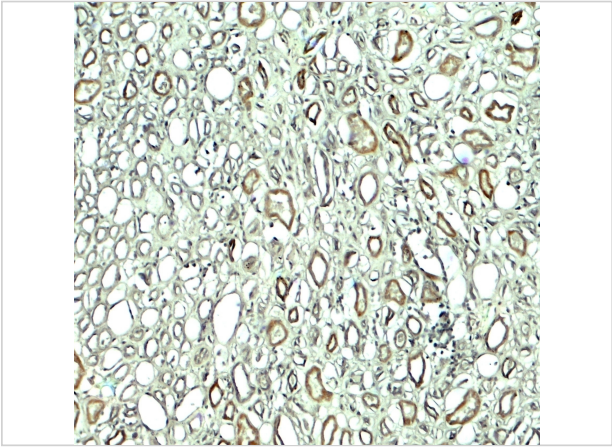
Properties

Purification	Rubicon antibody is affinity chromatography purified via peptide column.
Clonality	Polyclonal
Isotype	IgG
Physical State	Liquid
Buffer	Rubicon antibody is supplied in PBS containing 0.02% sodium azide.
Concentration	1 mg/mL
Storage Conditions	Rubicon antibody can be stored at 4°C for three months and -20°C, stable for up to one year.



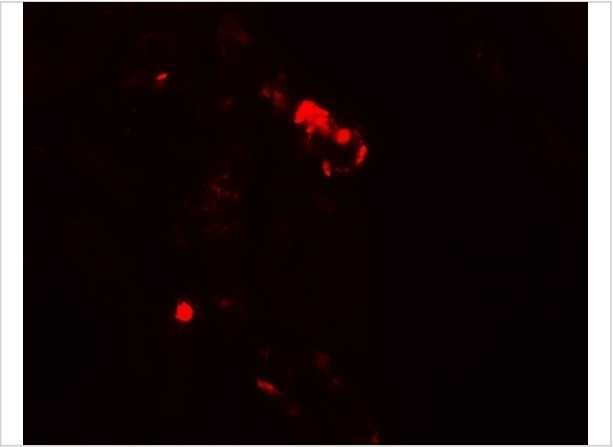
Rubicon Antibody 1

Western blot analysis of Rubicon in 293 cell lysate with Rubicon antibody at 1 µg/ml.



Rubicon Antibody 2

Immunohistochemistry of RUBICON in human kidney tissue with RUBICON antibody at 5 µg/ml.



Rubicon Antibody 3

Immunofluorescence of RUBICON in human kidney tissue with RUBICON antibody at 20 µg/ml.

Disclaimer

Disclaimer	Optimal dilutions/concentrations should be determined by the end user. The information provided is a guideline for product use. This product is for research use only.
------------	--

For research use only. For additional information, visit ProSci's [Terms and Conditions Page](#).