

BAMBI Antibody

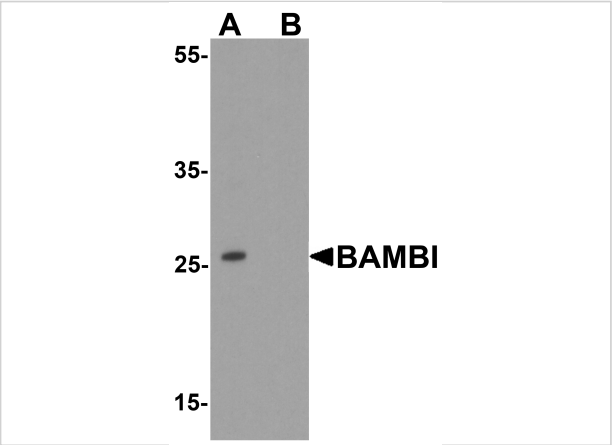
CATALOG NUMBER: 7931

Specifications

Host Species	Rabbit
Species Reactivity	Human, Mouse, Rat
Homology	Predicted species reactivity based on immunogen sequence: Sheep: (88%)
Immunogen	BAMBI antibody was raised against a 17 amino acid peptide near the center of human BAMBI. The immunogen is located within amino acids 100 - 150 of BAMBI.
Conjugate	Unconjugated
Tested Applications	ELISA, IF, IHC-P, WB
User Note	Optimal dilutions for each application to be determined by the researcher.
Specificity	BAMBI antibody is human, mouse and rat reactive.
Predicted Molecular Weight	Predicted: 29 kDa Observed: 26 kDa

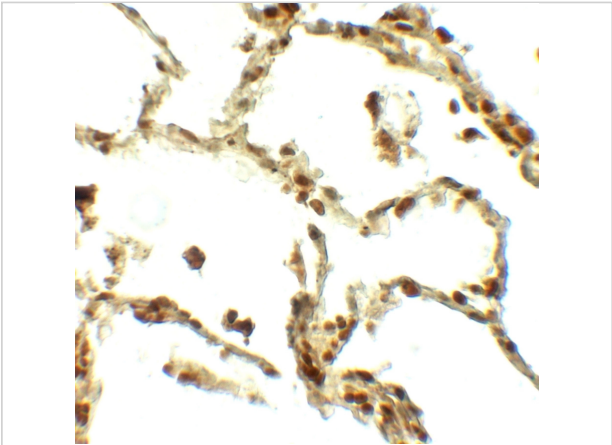
Properties

Purification	BAMBI antibody is affinity chromatography purified via peptide column.
Clonality	Polyclonal
Isotype	IgG
Physical State	Liquid
Buffer	BAMBI antibody is supplied in PBS containing 0.02% sodium azide.
Concentration	1 mg/mL
Storage Conditions	BAMBI antibody can be stored at 4°C for three months and -20°C, stable for up to one year.



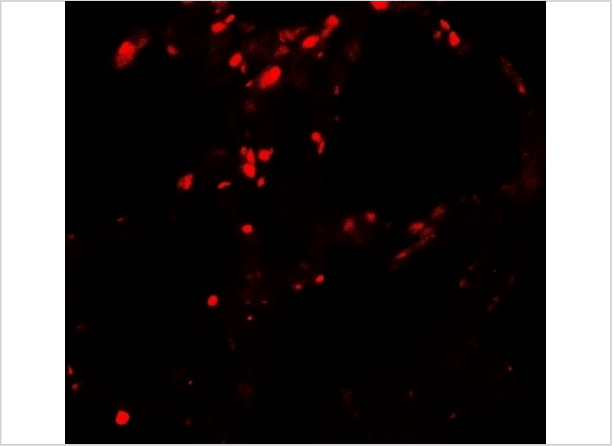
BAMBI Antibody 1

Western blot analysis of BAMBI in mouse lung tissue lysate with BAMBI antibody at 1 µg/ml in (A) the absence and (B) the presence of blocking peptide.



BAMBI Antibody 2

Immunohistochemistry of BAMBI in human lung tissue with BAMBI antibody at 5 µg/ml.



BAMBI Antibody 3

Immunofluorescence of BAMBI in human lung tissue with BAMBI antibody at 20 µg/ml.

Disclaimer

Disclaimer	Optimal dilutions/concentrations should be determined by the end user. The information provided is a guideline for product use. This product is for research use only.
-------------------	--

For research use only. For additional information, visit ProSci's [Terms and Conditions Page](#).