

## TRPC3 Antibody

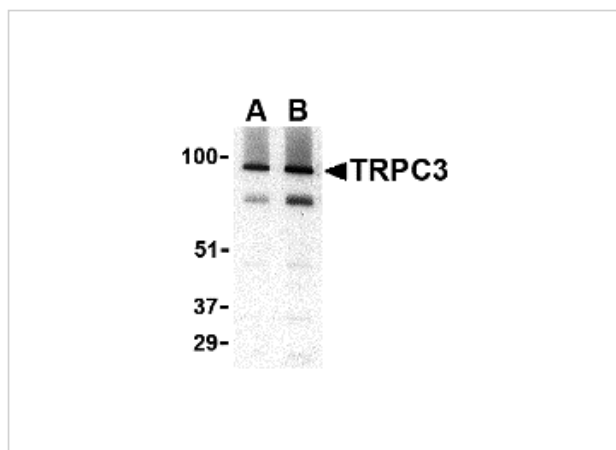
CATALOG NUMBER: 3905

### Specifications

Host Species	Rabbit
Species Reactivity	Human, Mouse
Homology	Predicted species reactivity based on immunogen sequence: Rat: (100%)
Immunogen	TRPC3 antibody was raised against a 14 amino acid synthetic peptide from near the carboxy terminus of human TRPC3. The immunogen is located within amino acids 760 - 810 of TRPC3.
Conjugate	Unconjugated
Tested Applications	ELISA, IF, IHC-P, WB
User Note	Optimal dilutions for each application to be determined by the researcher.

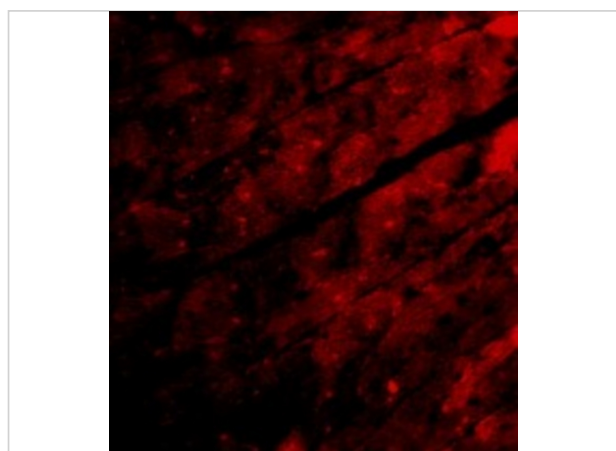
### Properties

Purification	TRPC3 Antibody is affinity chromatography purified via peptide column.
Clonality	Polyclonal
Isotype	IgG
Physical State	Liquid
Buffer	TRPC3 Antibody is supplied in PBS containing 0.02% sodium azide.
Concentration	1 mg/mL
Storage Conditions	TRPC3 antibody can be stored at 4°C up to one year. Antibodies should not be exposed to prolonged high temperatures.



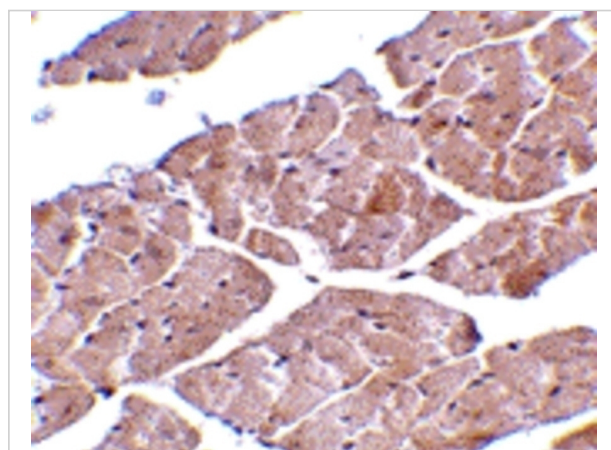
## TRPC3 Antibody 1

Western blot analysis of TRPC3 in human brain tissue lysate with TRPC3 antibody at (A) 1 and (B) 2  $\mu\text{g/mL}$ .



## TRPC3 Antibody 3

Immunofluorescence of TRPC3 in Mouse Heart cells with TRPC3 antibody at 20  $\mu\text{g/mL}$ .



## TRPC3 Antibody 2

Immunohistochemistry of TRPC3 in mouse heart tissue with TRPC3 antibody at 2  $\mu\text{g/mL}$ .

## Disclaimer

### Disclaimer

Optimal dilutions/concentrations should be determined by the end user. The information provided is a guideline for product use. This product is for research use only.

For research use only. For additional information, visit ProSci's [Terms and Conditions Page](#).