

SNCA Antibody

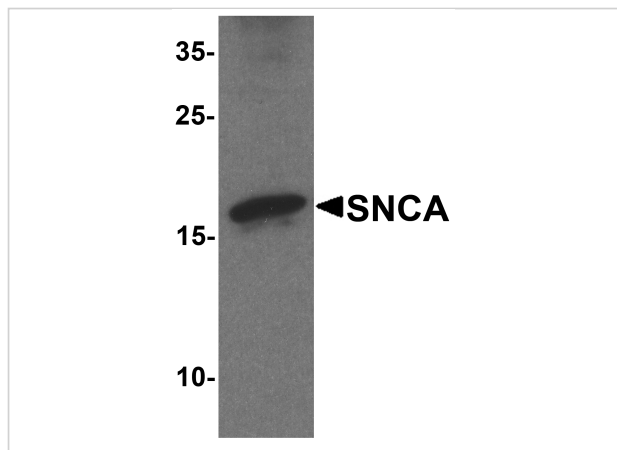
CATALOG NUMBER: 7911

Specifications

Host Species	Rabbit
Species Reactivity	Human, Mouse, Rat
Homology	Predicted species reactivity based on immunogen sequence: Pig: (100%), Bovine: (100%)
Immunogen	SNCA antibody was raised against a 19 amino acid peptide near the carboxy terminus of human SNCA. The immunogen is located within the last 50 amino acids of SNCA.
Conjugate	Unconjugated
Tested Applications	ELISA, IF, IHC-P, WB
User Note	Optimal dilutions for each application to be determined by the researcher.
Specificity	SNCA antibody is human, mouse and rat reactive. At least three isoforms of SNCA are known to exist.
Predicted Molecular Weight	Predicted: 12 kDa Observed: 16 kDa

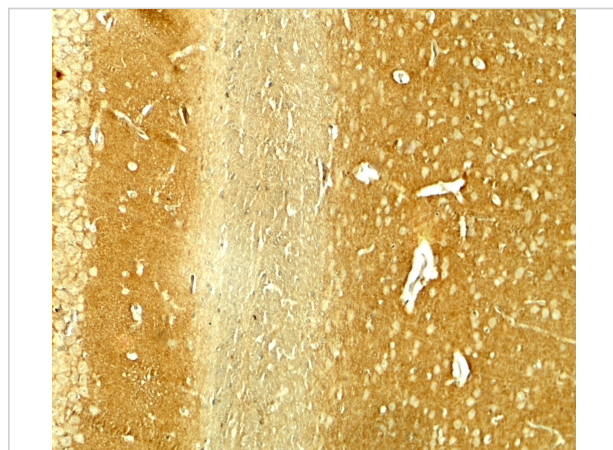
Properties

Purification	SNCA antibody is affinity chromatography purified via peptide column.
Clonality	Polyclonal
Isotype	IgG
Physical State	Liquid
Buffer	SNCA antibody is supplied in PBS containing 0.02% sodium azide.
Concentration	1 mg/mL
Storage Conditions	SNCA antibody can be stored at 4°C for three months and -20°C, stable for up to one year.



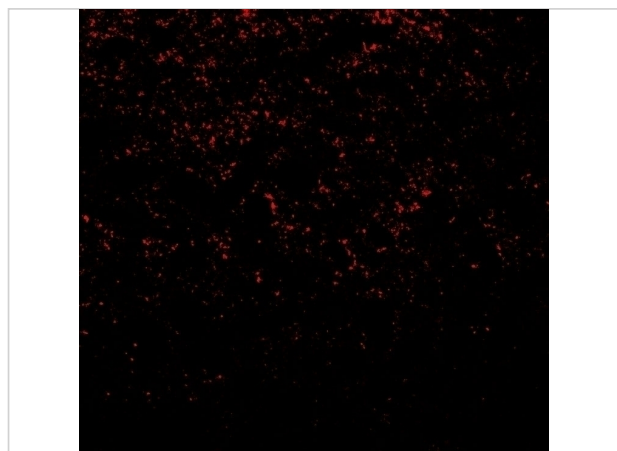
SNCA Antibody 1

Western blot analysis of SNCA in mouse cerebellum tissue lysate with SNCA antibody at 1 µg/ml.



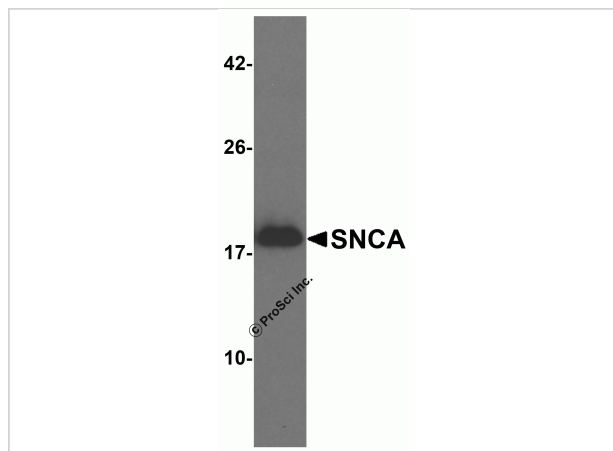
SNCA Antibody 2

Immunohistochemistry of SNCA in rat brain tissue with SNCA antibody at 5 µg/ml.



SNCA Antibody 3

Immunofluorescence of SNCA in rat brain tissue with SNCA antibody at 20 µg/ml.



SNCA Antibody 4

Western blot analysis of 1 ng of recombinant human SNCA with SNCA antibody at 1 µg/ml.

Disclaimer

Disclaimer

Optimal dilutions/concentrations should be determined by the end user. The information provided is a guideline for product use. This product is for research use only.

For research use only. For additional information, visit ProSci's [Terms and Conditions Page](#).