

TRPC6 Antibody

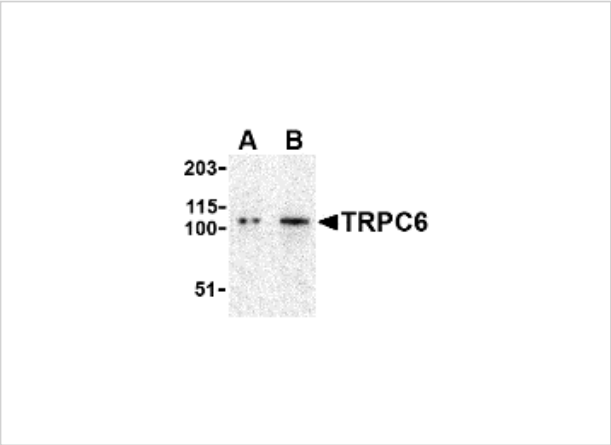
CATALOG NUMBER: 3899

Specifications

| | |
|---------------------|------------------------------------------------------------------------------------------------------------------------------------------------------------------------------------|
| Host Species | Rabbit |
| Species Reactivity | Human, Mouse |
| Immunogen | TRPC6 antibody was raised against a 14 amino acid synthetic peptide from near the amino terminus of human TRPC6. The immunogen is located within amino acids 50 - 100 of TRPC6. |
| Conjugate | Unconjugated |
| Tested Applications | ELISA, IF, IHC-P, WB |
| User Note | Optimal dilutions for each application to be determined by the researcher. |
| Specificity | This antibody may cross-react with TRPC3. |

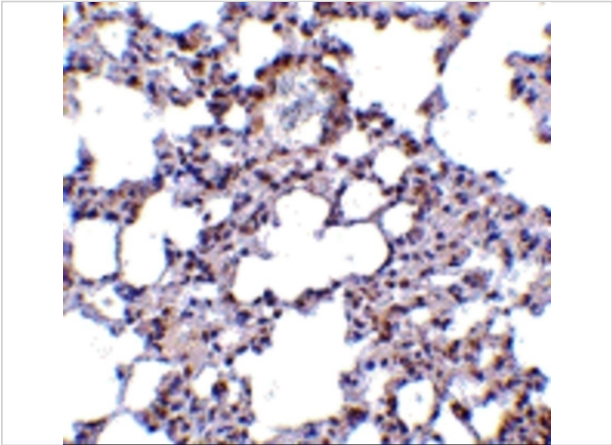
Properties

| | |
|--------------------|-----------------------------------------------------------------------------------------------------------------------------------------------------------------------------------------------------------------------------------------------------|
| Purification | TRPC6 Antibody is affinity chromatography purified via peptide column. |
| Clonality | Polyclonal |
| Isotype | IgG |
| Physical State | Liquid |
| Buffer | TRPC6 Antibody is supplied in PBS containing 0.02% sodium azide. |
| Concentration | 1 mg/mL |
| Storage Conditions | TRPC6 antibody can be stored at 4°C for three months and -20°C, stable for up to one year. As with all antibodies care should be taken to avoid repeated freeze thaw cycles. Antibodies should not be exposed to prolonged high temperatures. |



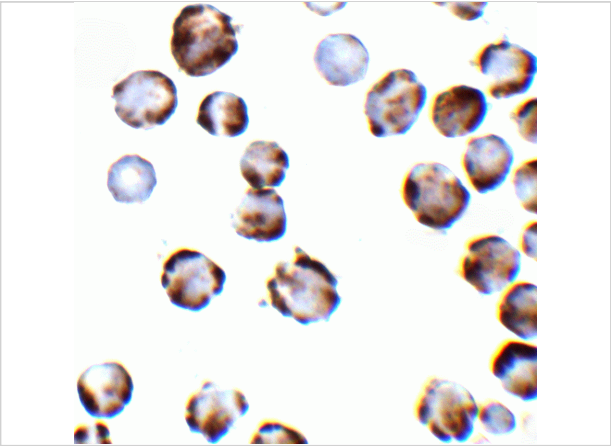
TRPC6 Antibody 1

Western blot analysis of TRPC6 in K562 cell lysate with TRPC6 antibody at (A) 0.5 and (B) 1 µg/mL.



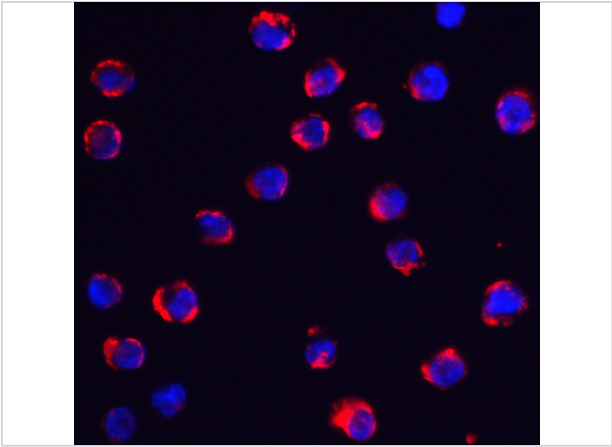
TRPC6 Antibody 2

Immunohistochemistry of TRPC6 in mouse lung tissue with TRPC6 antibody at 10 µg/mL.



TRPC6 Antibody 3

Immunocytochemistry of TRPC6 in K562 cells with TRPC6 antibody at 2 µg/mL.



TRPC6 Antibody 4

Immunofluorescence of TRPC6 in K562 cells with TRPC6 antibody at 5 µg/mL.

Red: TRPC6 Antibody (3899)
Blue: DAPI staining

Disclaimer

| | |
|------------|------------------------------------------------------------------------------------------------------------------------------------------------------------------------|
| Disclaimer | Optimal dilutions/concentrations should be determined by the end user. The information provided is a guideline for product use. This product is for research use only. |
|------------|------------------------------------------------------------------------------------------------------------------------------------------------------------------------|

For research use only. For additional information, visit ProSci's [Terms and Conditions Page](#).