

PDCL2 Antibody

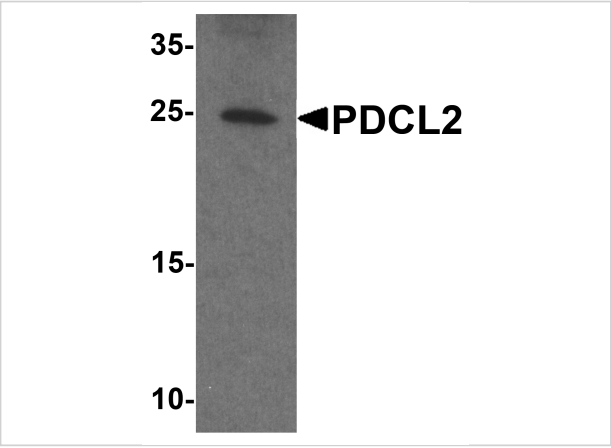
CATALOG NUMBER: 7887

Specifications

Host Species	Rabbit
Species Reactivity	Human, Mouse, Rat
Immunogen	PDCL2 antibody was raised against an 18 amino acid peptide near the carboxy terminus of human PDCL2. The immunogen is located within the last 50 amino acids of PDCL2.
Conjugate	Unconjugated
Tested Applications	ELISA, WB
User Note	Optimal dilutions for each application to be determined by the researcher.
Specificity	PDCL2 antibody is human, mouse and rat reactive. PDCL2 antibody is predicted to not cross-react with other members of the PDCL protein family.
Predicted Molecular Weight	Predicted: 27 kDa Observed: 25 kDa

Properties

Purification	PDCL2 antibody is affinity chromatography purified via peptide column.
Clonality	Polyclonal
Isotype	IgG
Physical State	Liquid
Buffer	PDCL2 antibody is supplied in PBS containing 0.02% sodium azide.
Concentration	1 mg/mL
Storage Conditions	PDCL2 antibody can be stored at 4°C for three months and -20°C, stable for up to one year.



PDCL2 Antibody 1

Western blot analysis of PDCL2 in rat liver tissue lysate with PDCL2 antibody at 1 µg/ml.

Disclaimer

Disclaimer	Optimal dilutions/concentrations should be determined by the end user. The information provided is a guideline for product use. This product is for research use only.
------------	------------------------------------------------------------------------------------------------------------------------------------------------------------------------

For research use only. For additional information, visit ProSci's [Terms and Conditions Page](#).