

His-tag Antibody

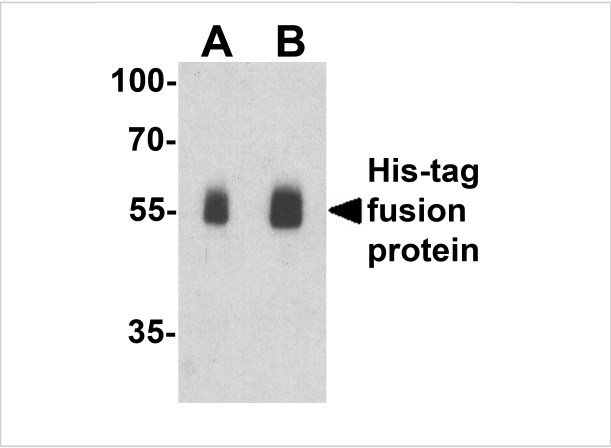
CATALOG NUMBER: 7877

Specifications

Host Species	Rabbit
Species Reactivity	Tag
Immunogen	His-tag antibody was raised against a synthetic peptide containing HHHHHH.
Conjugate	Unconjugated
Tested Applications	ELISA, IP, WB
User Note	Optimal dilutions for each application to be determined by the researcher.
Specificity	His-tag antibody will detect amino- or carboxy-terminal His-tagged recombinant proteins.
Predicted Molecular Weight	N/A

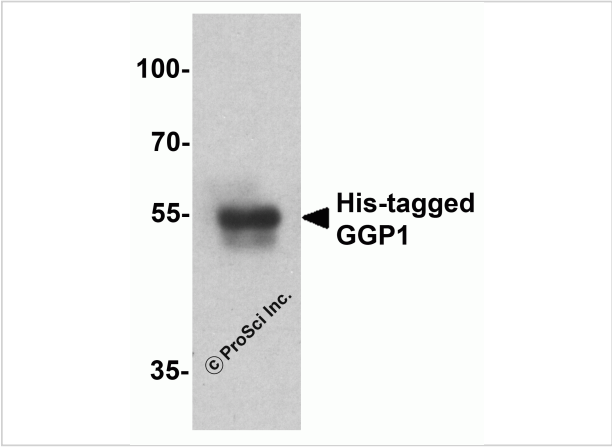
Properties

Purification	His-tag antibody is affinity chromatography purified via peptide column.
Clonality	Polyclonal
Isotype	IgG
Physical State	Liquid
Buffer	His-tag antibody is supplied in PBS containing 0.02% sodium azide.
Concentration	1 mg/mL
Storage Conditions	His-tag antibody can be stored at 4°C for three months and -20°C, stable for up to one year.



His-tag Antibody 1

Western blot analysis of a His-tag-containing recombinant protein with His-tag antibody at (A) 0.25 and (B) 0.5 µg/ml.



His-tag Antibody 2

Western blot analysis of 20ng of His-tagged recombinant GGP1 protein using 1 µg of His antibody to immunoprecipitate and 1 µg/ml anti-GGP1 antibody to detect.

Disclaimer

Disclaimer	Optimal dilutions/concentrations should be determined by the end user. The information provided is a guideline for product use. This product is for research use only.
------------	--

For research use only. For additional information, visit ProSci's [Terms and Conditions Page](#).