



ProSci Incorporated  
12170 Flint Place  
Poway, CA 92064, USA  
prosci-inc.com

P: +1 (888) 513-9525  
Local: +1 (858) 513-2638  
Fax: +1 (858) 513-2692

customercare@prosci-inc.com  
techsupport@prosci-inc.com

## HAT-tag Antibody

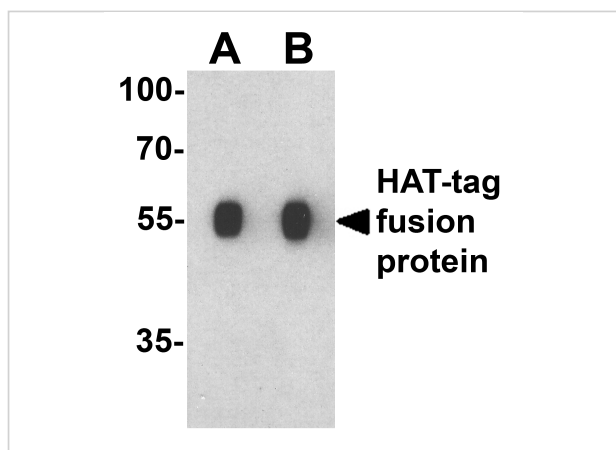
CATALOG NUMBER: 7875

### Specifications

Host Species	Rabbit
Species Reactivity	Tag
Immunogen	HAT-tag antibody was raised against a synthetic peptide containing KDHLIHNVHKEFHAAHNK.
Conjugate	Unconjugated
Tested Applications	ELISA, IP, WB
User Note	Optimal dilutions for each application to be determined by the researcher.
Specificity	HAT-tag antibody will detect amino- or carboxy-terminal HAT-tagged recombinant proteins.
Predicted Molecular Weight	N/A

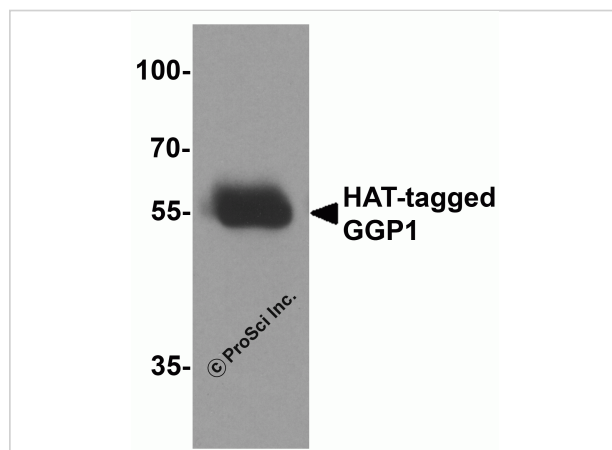
### Properties

Purification	HAT-tag antibody is affinity chromatography purified via peptide column.
Clonality	Polyclonal
Isotype	IgG
Physical State	Liquid
Buffer	HAT-tag antibody is supplied in PBS containing 0.02% sodium azide.
Concentration	1 mg/mL
Storage Conditions	HAT-tag antibody can be stored at 4°C for three months and -20°C, stable for up to one year.



### HAT-tag Antibody 1

Western blot analysis of a HAT-tag-containing recombinant protein with HAT-tag antibody at (A) 0.125 and (B) 0.25  $\mu\text{g}/\text{ml}$ .



### HAT-tag Antibody 2

Western blot analysis of 20ng of HAT-tagged recombinant GGP1 protein using 1  $\mu\text{g}$  of HAT antibody to immunoprecipitate and 1  $\mu\text{g}/\text{ml}$  anti-GGP1 antibody to detect.

## Disclaimer

#### Disclaimer

Optimal dilutions/concentrations should be determined by the end user. The information provided is a guideline for product use. This product is for research use only.

For research use only. For additional information, visit ProSci's [Terms and Conditions Page](#).