

## TIP47 Antibody

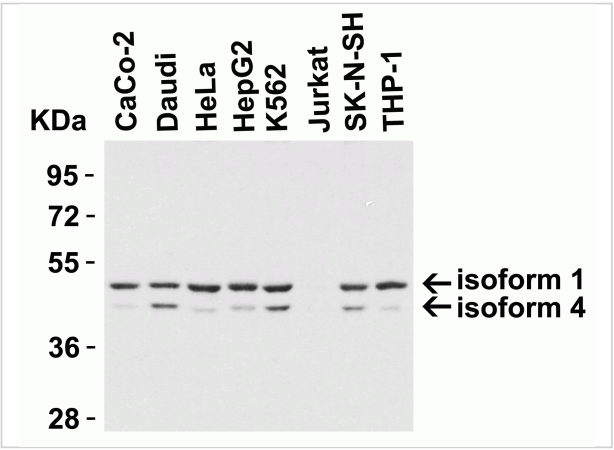
CATALOG NUMBER: 3883

### Specifications

Host Species	Rabbit
Species Reactivity	Human, Mouse
Homology	Predicted species reactivity based on immunogen sequence: Pig: (86%), Rat (79%)
Immunogen	Anti-TIP47 antibody ( <b>3883</b> ) was raised against a peptide corresponding to 14 amino acids near the amino terminus of human TIP47. The immunogen is located within amino acids 30 - 80 of TIP47.
Conjugate	Unconjugated
Tested Applications	ELISA, IHC-P, WB
User Note	Optimal dilutions for each application to be determined by the researcher.
Predicted Molecular Weight	Predicted: 47kD and 46kD Observed: 47kD and 46kD

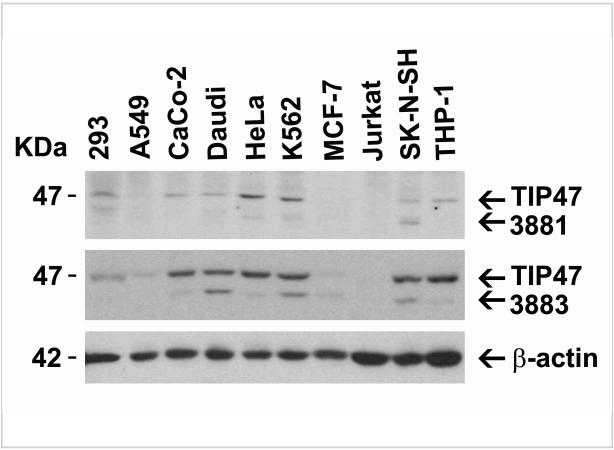
### Properties

Purification	TIP47 Antibody is affinity chromatography purified via peptide column.
Clonality	Polyclonal
Isotype	IgG
Physical State	Liquid
Buffer	TIP47 Antibody is supplied in PBS containing 0.02% sodium azide.
Concentration	1 mg/mL
Storage Conditions	TIP47 antibody can be stored at 4°C for three months and -20°C, stable for up to one year. As with all antibodies care should be taken to avoid repeated freeze thaw cycles. Antibodies should not be exposed to prolonged high temperatures.



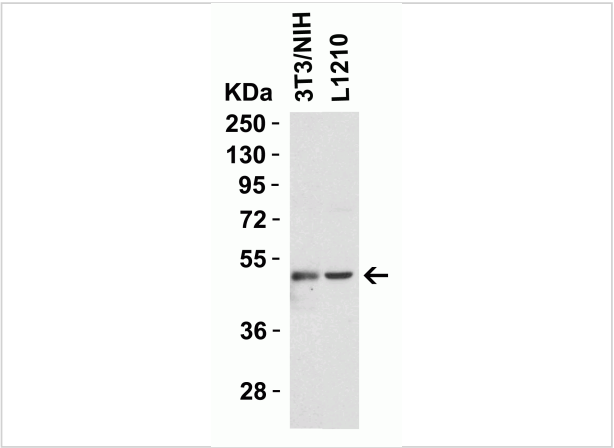
### TIP47 Antibody 1

**Figure 1 Western Blot Validation in Human Cell Lines**  
 Loading: 15 µg of lysates per lane. Antibodies: TIP47 3883, (1 µg/mL), 1h incubation at RT in 5% NFDm/TBST. Secondary: Goat an...



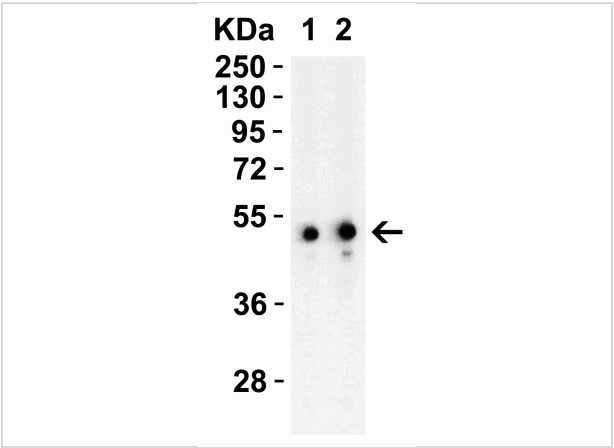
### TIP47 Antibody 2

**Figure 2 Independent Antibody Validation (IAV) via Protein Expression Profile in Human Cell Lines**  
 Loading: 15 µg of lysates per lane. Antibodies: TIP47 3881 (4 µg/mL), TIP47 3883...



### TIP47 Antibody 3

**Figure 3 Western Blot Validation in Mouse Cell Lines**  
 Loading: 15 µg of lysates per lane. Antibodies: TIP47 3883 (1 µg/mL), 1h incubation at RT in 5% NFDm/TBST. Secondary: Goat ant...



### TIP47 Antibody 4

**Figure 4 Western Blot Validation in Mouse EL4 Cells**  
 Loading: 15 µg of lysates per lane. Antibodies: TIP47 3883, 1h incubation at RT in 5% NFDm/TBST. Secondary: Goat anti-rabbit Ig...

## Disclaimer

Disclaimer	Optimal dilutions/concentrations should be determined by the end user. The information provided is a guideline for product use. This product is for research use only.
------------	--

For research use only. For additional information, visit ProSci's [Terms and Conditions Page](#).