

FKBP12 Antibody

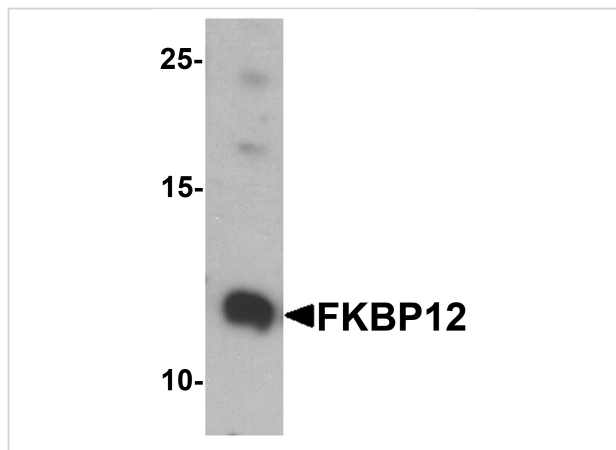
CATALOG NUMBER: 7789

Specifications

Host Species	Rabbit
Species Reactivity	Human, Mouse, Rat
Homology	Predicted species reactivity based on immunogen sequence: Bovine: (100%), Rabbit: (100%)
Immunogen	FKBP12 antibody was raised against an 18 amino acid peptide near the center of human FKBP12. The immunogen is located within the first 50 amino acids of FKBP12.
Conjugate	Unconjugated
Tested Applications	ELISA, ICC, IF, WB
User Note	Optimal dilutions for each application to be determined by the researcher.
Specificity	FKBP12 antibody is human, mouse and rat reactive.
Predicted Molecular Weight	Predicted: 12 kDa Observed: 12 kDa

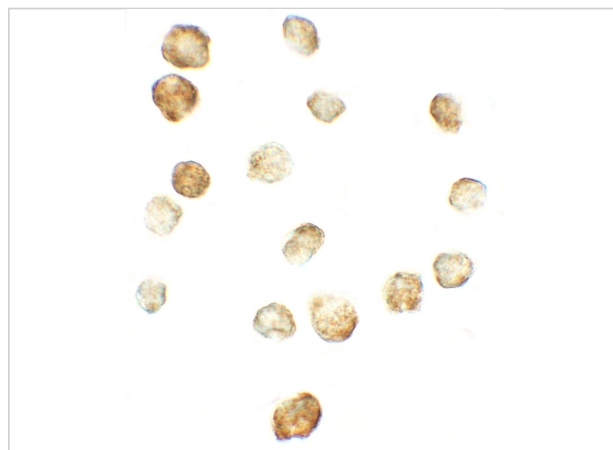
Properties

Purification	FKBP12 antibody is affinity chromatography purified via peptide column.
Clonality	Polyclonal
Isotype	IgG
Physical State	Liquid
Buffer	FKBP12 Antibody is supplied in PBS containing 0.02% sodium azide.
Concentration	1 mg/mL
Storage Conditions	FKBP12 antibody can be stored at 4°C for three months and -20°C, stable for up to one year.



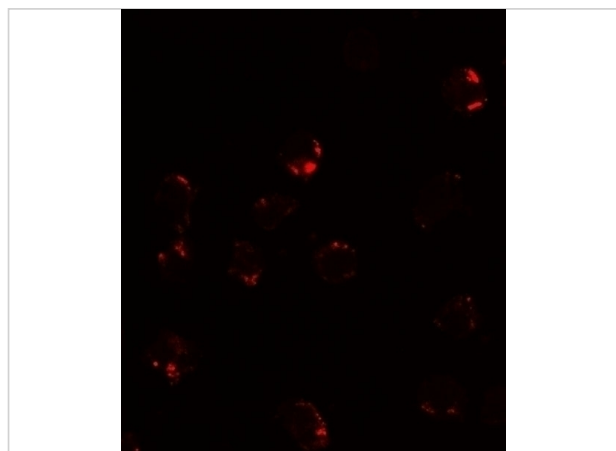
FKBP12 Antibody 1

Western blot analysis of FKBP12 in A431 cell lysate with FKBP12 antibody at 1 µg/ml.



FKBP12 Antibody 2

Immunocytochemistry of FKBP12 in A431 cells with FKBP12 antibody at 5 µg/mL.



FKBP12 Antibody 3

Immunofluorescence of FKBP12 in A431 cells with FKBP12 antibody at 20 µg/mL.

Disclaimer

Disclaimer

Optimal dilutions/concentrations should be determined by the end user. The information provided is a guideline for product use. This product is for research use only.

For research use only. For additional information, visit ProSci's [Terms and Conditions Page](#).