

DEPTOR Antibody

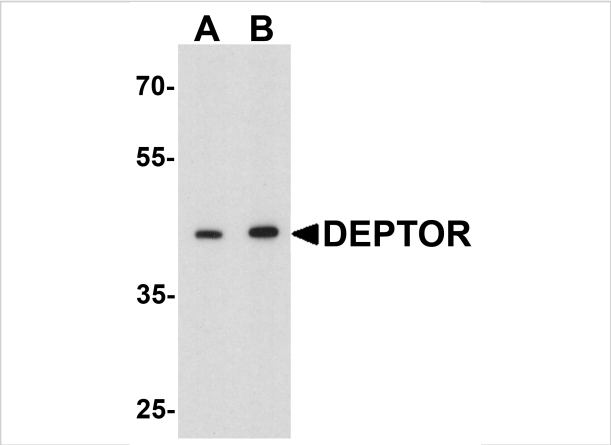
CATALOG NUMBER: 7787

Specifications

Host Species	Rabbit
Species Reactivity	Human, Mouse, Rat
Immunogen	DEPTOR antibody was raised against a 16 amino acid peptide near the center of human DEPTOR. The immunogen is located within amino acids 220 - 270 of DEPTOR.
Conjugate	Unconjugated
Tested Applications	ELISA, IHC-P, WB
User Note	Optimal dilutions for each application to be determined by the researcher.
Specificity	DEPTOR antibody is human, mouse and rat reactive. At least three isoforms of DEPTOR are known to exist; this antibody will detect all three isoforms.
Predicted Molecular Weight	Predicted: 45 kDa Observed: 42 kDa

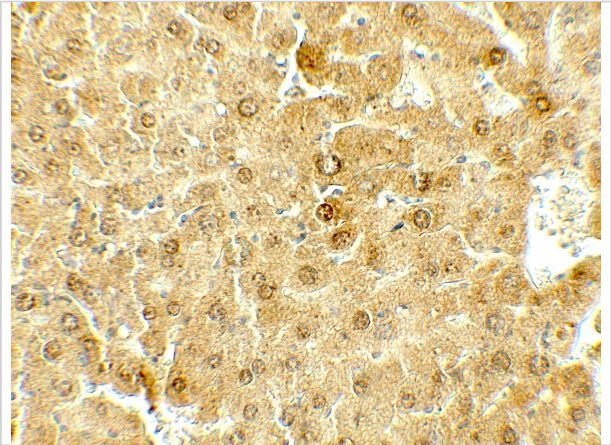
Properties

Purification	DEPTOR antibody is affinity chromatography purified via peptide column.
Clonality	Polyclonal
Isotype	IgG
Physical State	Liquid
Buffer	DEPTOR Antibody is supplied in PBS containing 0.02% sodium azide.
Concentration	1 mg/mL
Storage Conditions	DEPTOR antibody can be stored at 4°C for three months and -20°C, stable for up to one year.



DEPTOR Antibody 1

Western blot analysis of DEPTOR in mouse liver tissue lysate with DEPTOR antibody at (A) 1 and (B) 2 µg/ml.



DEPTOR Antibody 2

Immunohistochemistry of DEPTOR in mouse liver tissue with DEPTOR antibody at 5 µg/mL.

Disclaimer

Disclaimer	Optimal dilutions/concentrations should be determined by the end user. The information provided is a guideline for product use. This product is for research use only.
------------	--

For research use only. For additional information, visit ProSci's [Terms and Conditions Page](#).